

MAXWATT®

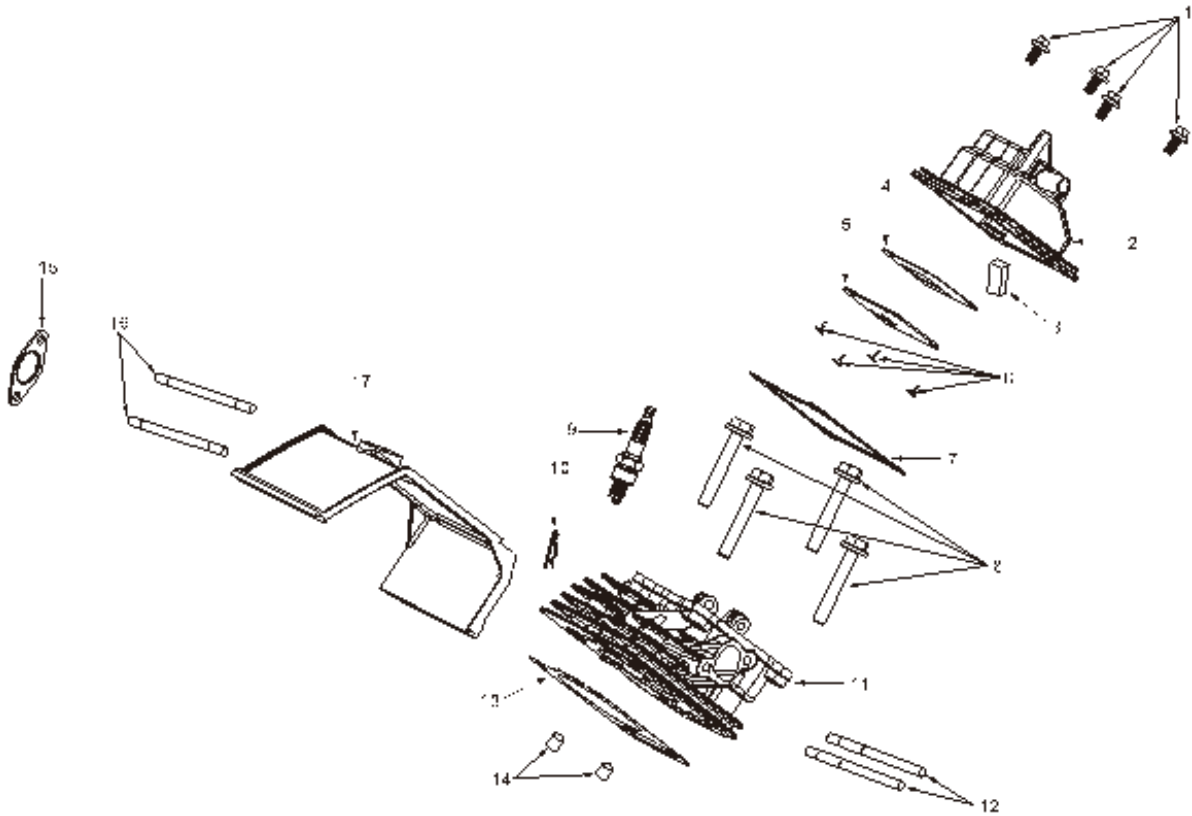
POWER WHEN YOU NEED IT

SPARE PARTS CATALOGUE



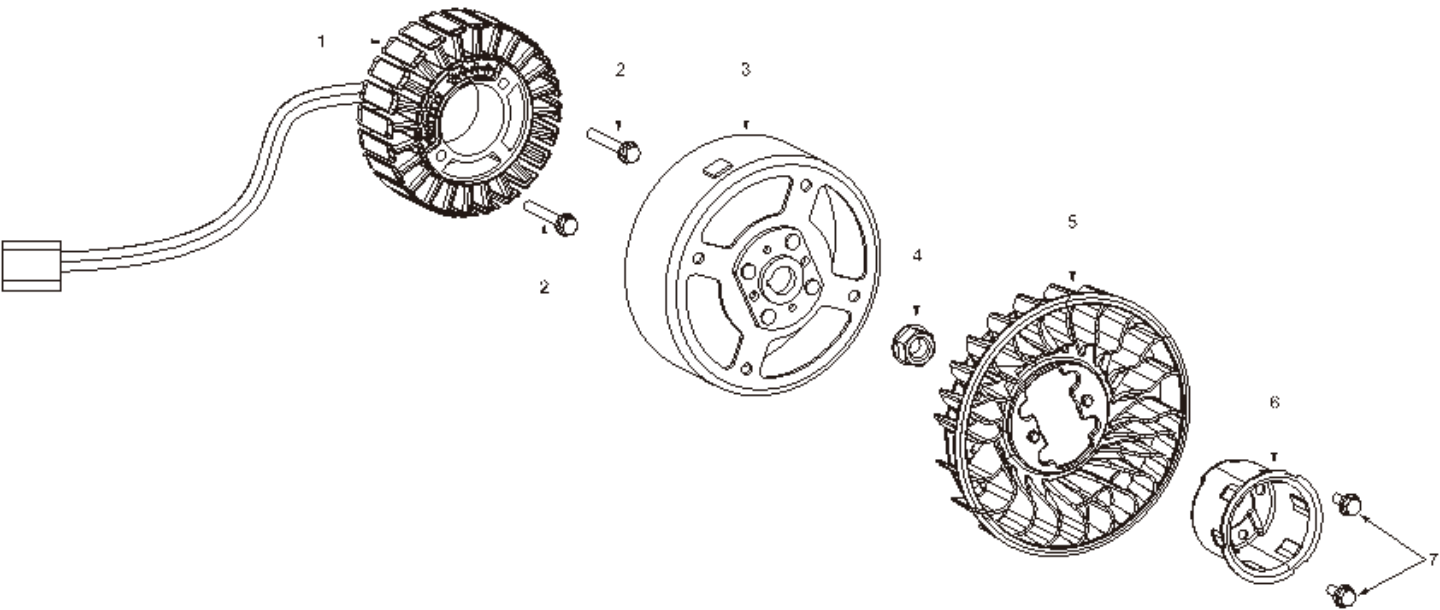
MX3800ISE

CYLINDER HEAD COVER



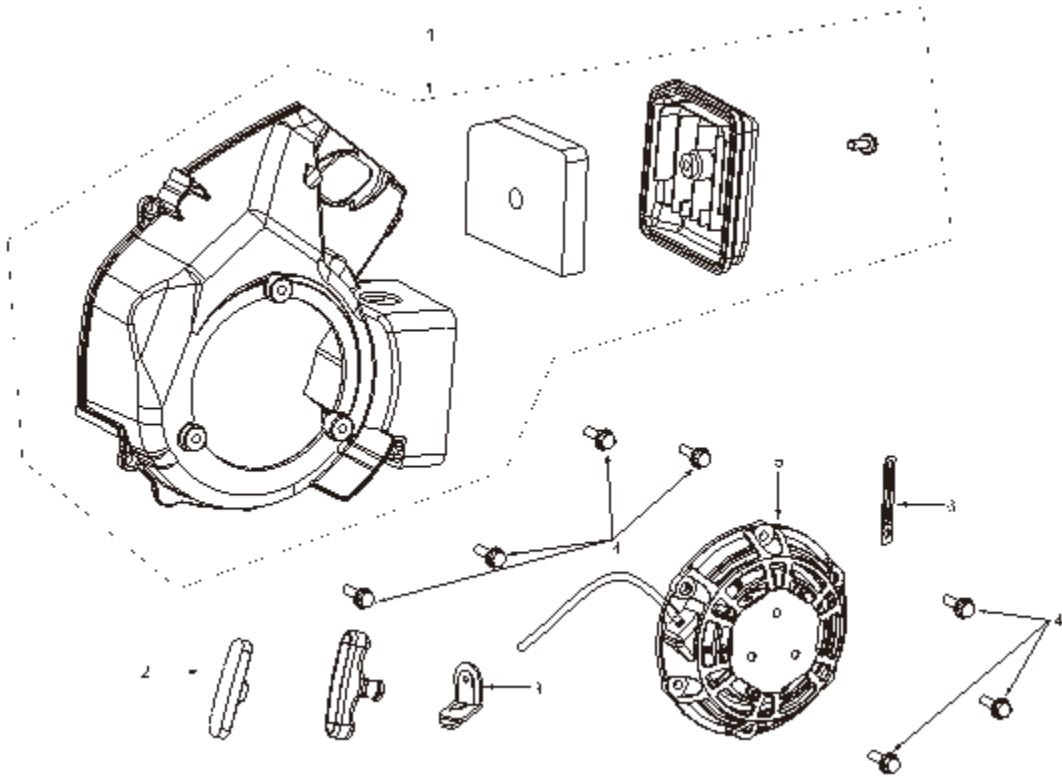
| NO. | DESCRIPTION | MAXWATT PART NUMBER |
|-----|---------------------------------------------|---------------------|
| 1 | Bolt M6×18 | |
| 2 | Cover subassembly,Cylinder head | SP3800ISE-001 |
| 3 | Oil screen 45×25×12.5 | |
| 4 | Sealing gasket of breathing tank | |
| 5 | Breathing valve cover plate | |
| 6 | Cross head screw 4×8 | |
| 7 | Cylinder head gasket | SP3800ISE-002 |
| 8 | Bolt M8×60 | |
| 9 | Spark plug | SP3800ISE-003 |
| 10 | Locking clamp of speed regulating swing rod | |
| 11 | Cylinder head | |
| 12 | Stud bolt | |
| 13 | Gasket,Cylinder head | |
| 14 | Pin 10×14 | |
| 15 | Exhaust port gasket | |
| 16 | Limit plate gasket M6×78 | |
| 17 | Wind deflector | |

MOTOR



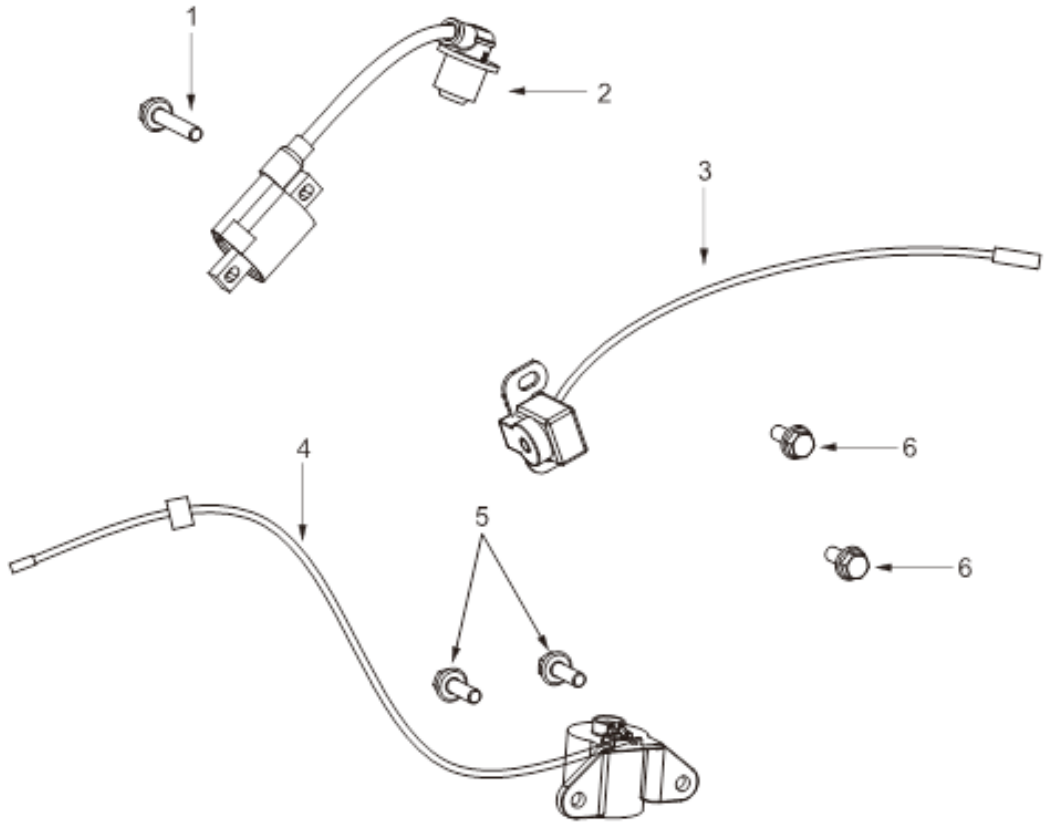
| NO. | DESCRIPTION | MAXWATT PART NUMBER |
|-----|-----------------------|---------------------|
| 1 | Motor stator | |
| 2 | Bolt M6×35 | |
| 3 | Motor rotor | |
| 4 | Nut with disc M14×1.5 | |
| 5 | Impeller | |
| 6 | Starting sleeve | |
| 7 | Bolt M6×12 | |

STARTER



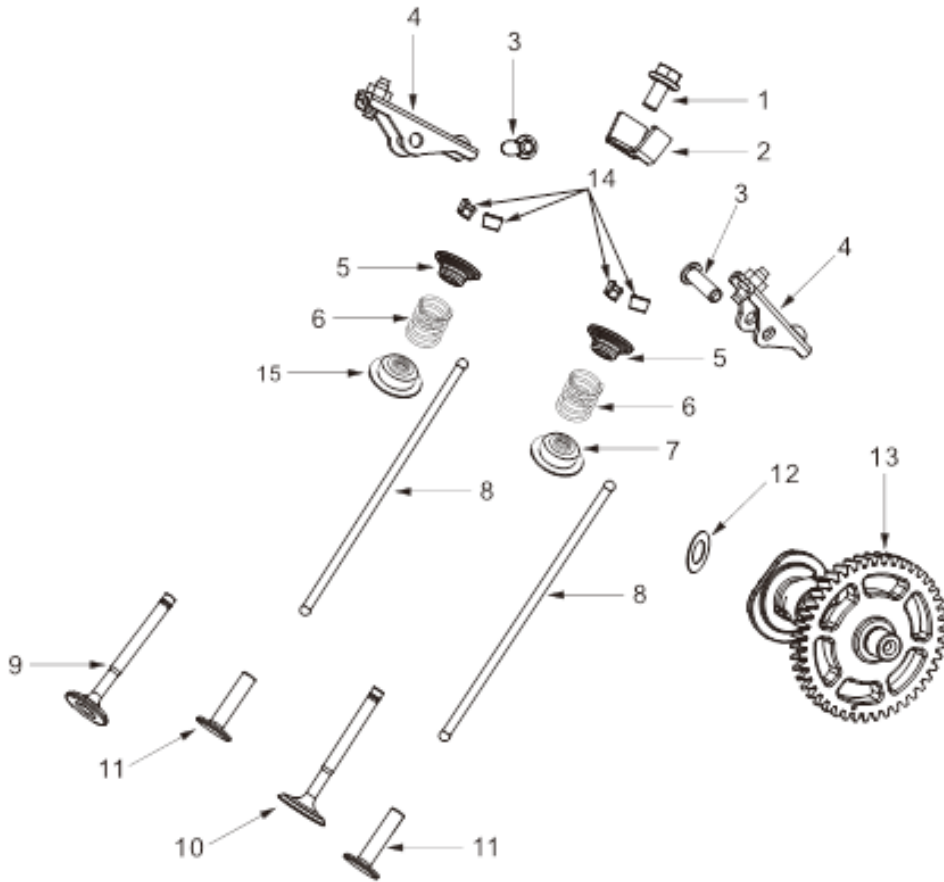
| NO. | DESCRIPTION | MAXWATT PART NUMBER |
|-----|---------------------|---------------------|
| 1 | Air filter assembly | SP3800ISE-004 |
| 2 | Starting handle | SP3800ISE-005 |
| 3 | Handle cover plate | |
| 4 | Bolt | |
| 5 | Pulling plate | SP3800ISE-005 |
| 6 | Crimping board | |

IGNITION COIL



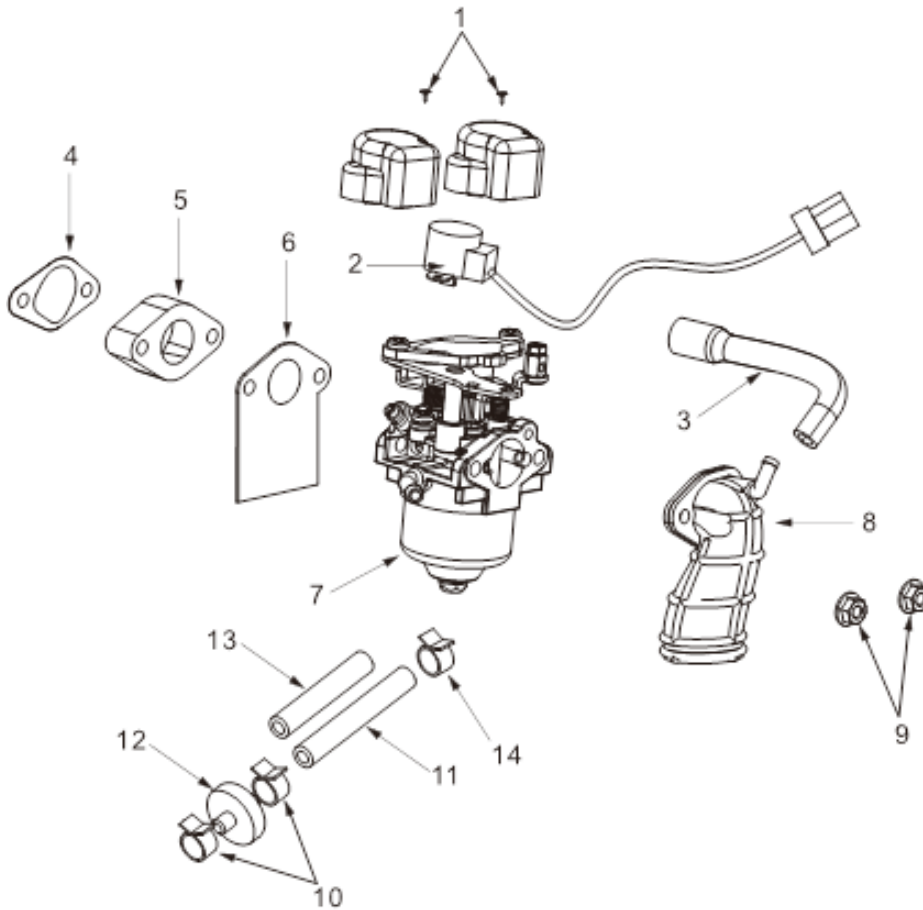
| NO. | DESCRIPTION | MAXWATT PART NUMBER |
|-----|-----------------------|---------------------|
| 1 | Bolt M5×16 | |
| 2 | Ignition coil | SP3800ISE-006 |
| 3 | Trigger coil assembly | SP3800ISE-007 |
| 4 | Oil alarm | |
| 5 | Bolt M6×14 | |
| 6 | Bolt M6×12 | |

CAMSHAFT



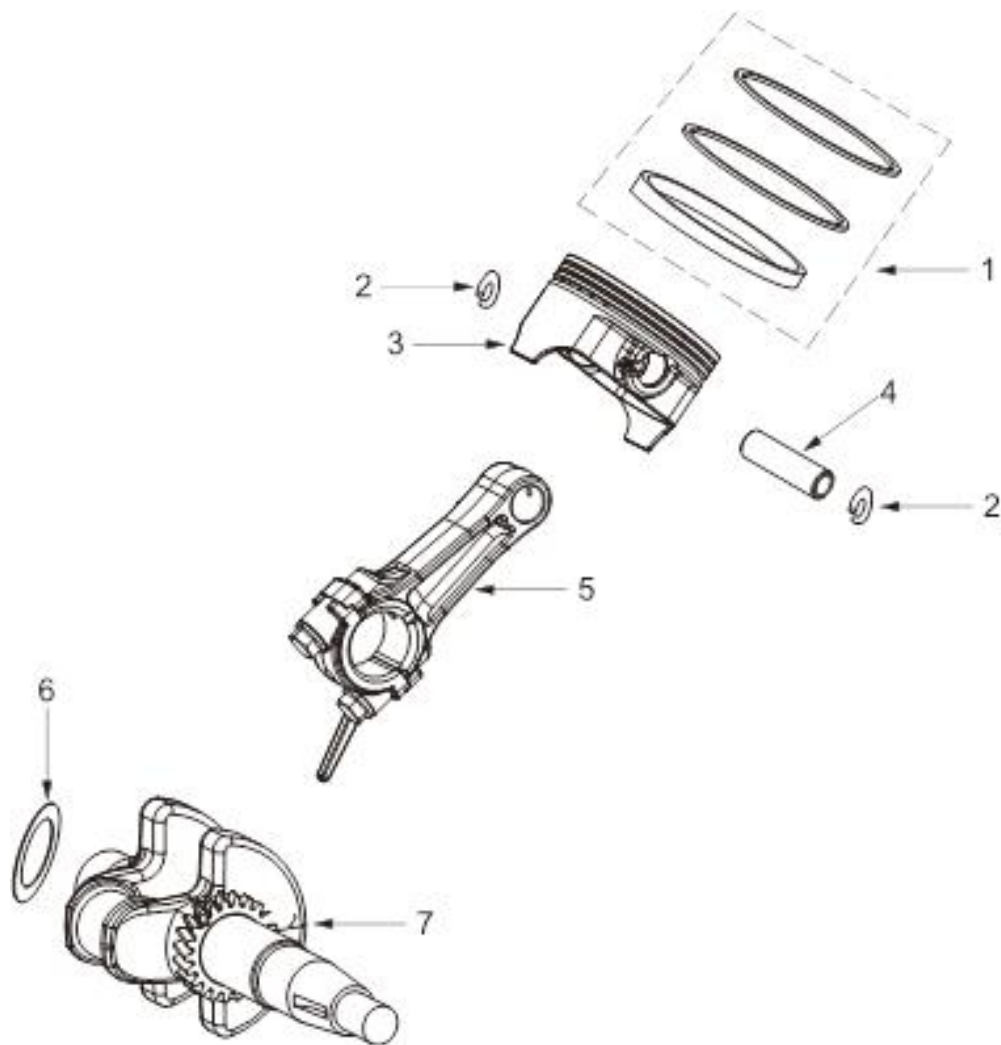
| NO. | DESCRIPTION | MAXWATT PART NUMBER | |
|-----|-------------------------------------------------------------|---------------------|---------------|
| 1 | Bolt M6×10 | SP3800ISE-008 | |
| 2 | Rocker shaft stop | | |
| 3 | Rocker pin | | |
| 4 | Rocker arm assembly | | |
| 5 | Intake and exhaust valve spring seat | | |
| 6 | Valve spring | | |
| 7 | Oil baffle | | |
| 8 | Putter | | |
| 9 | Exhaust valve | | |
| 10 | Intake valve | | |
| 11 | Tappet | | |
| 12 | Wear resistant gasket $\Phi 18 \times \Phi 10.2 \times 0.5$ | | |
| 13 | Camshaft components | | |
| 14 | Valve clamp lock | | SP3800ISE-008 |
| 15 | Oil baffle(exhaust valve) | | |

CARBURETOR



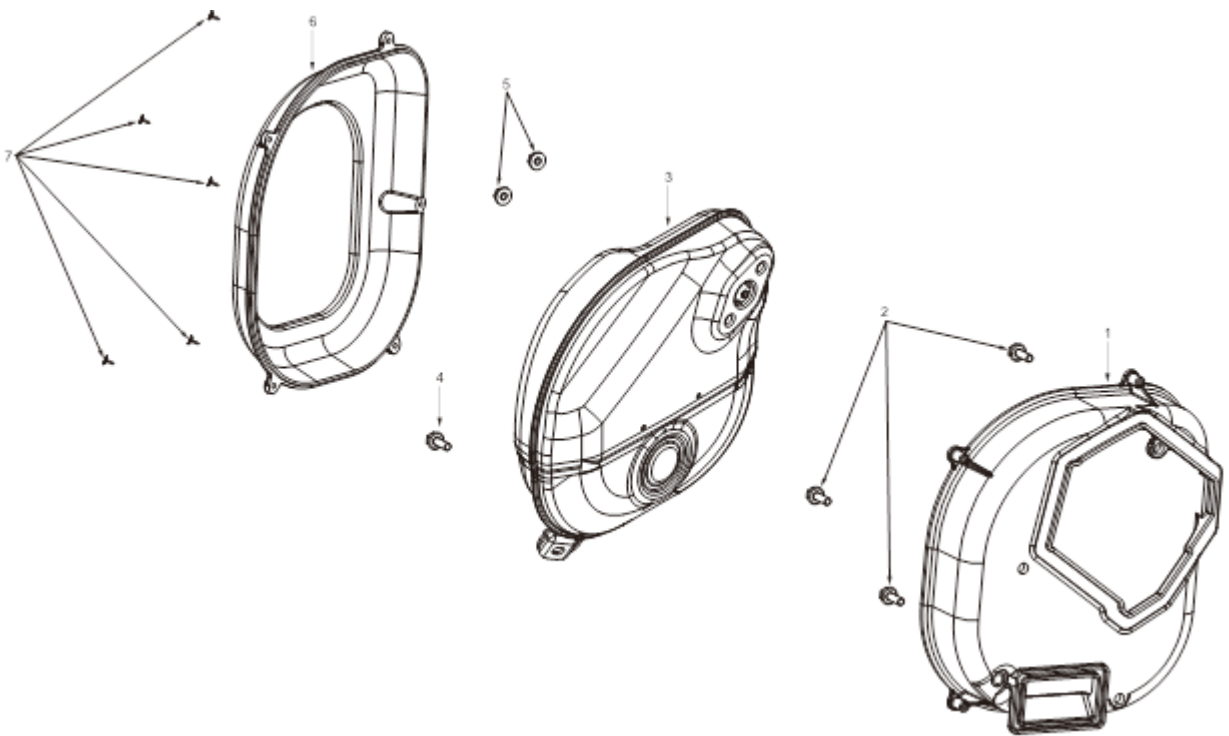
| NO. | DESCRIPTION | MAXWATT PART NUMBER |
|-----|-----------------------|---------------------|
| 1 | Cross head screw | |
| 2 | Stepper motor | SP3800ISE-009 |
| 3 | Exhaust pipe | |
| 4 | Air inlet gasket | SP3800ISE-009 |
| 5 | Carburetor block | |
| 6 | Carburetor gasket | |
| 7 | Carburetor | |
| 8 | Intake elbow | |
| 9 | Locking nut with disc | |
| 10 | Ribbon tubing clamp | |
| 11 | Tubing | SP3800ISE-010 |
| 12 | Fuel filter | SP3800ISE-011 |
| 13 | Sheath | SP3800ISE-010 |
| 14 | Ribbon tubing clamp | |

PISTON



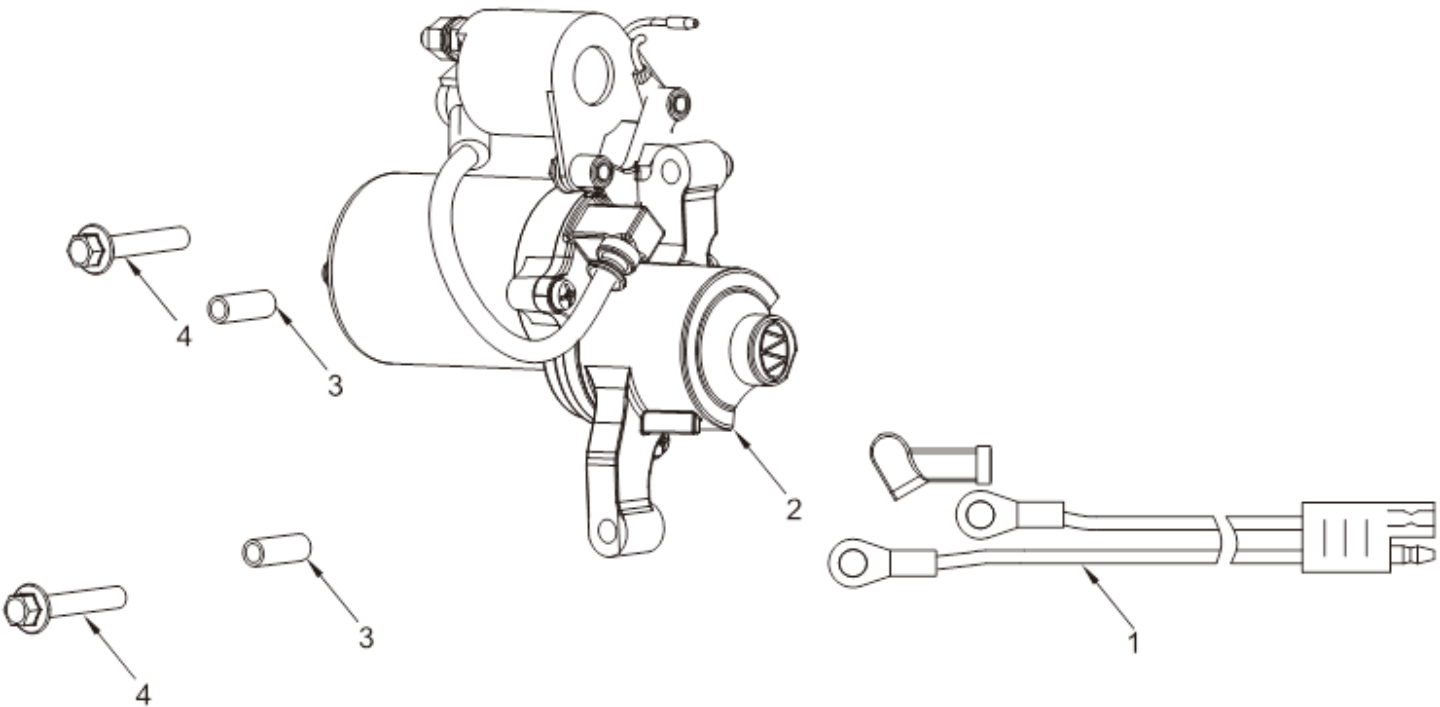
| NO. | DESCRIPTION | MAXWATT PART NUMBER |
|-----|-------------------------------------------------------------|---------------------|
| 1 | Ring as-piston | |
| 2 | Piston pin circlip | |
| 3 | Piston | |
| 4 | piston pin | |
| 5 | Connecting rod assembly | |
| 6 | Wear resistant gasket $\Phi 36 \times \Phi 25.3 \times 0.5$ | |
| 7 | Crankshaft assembly | |

MUFFLER



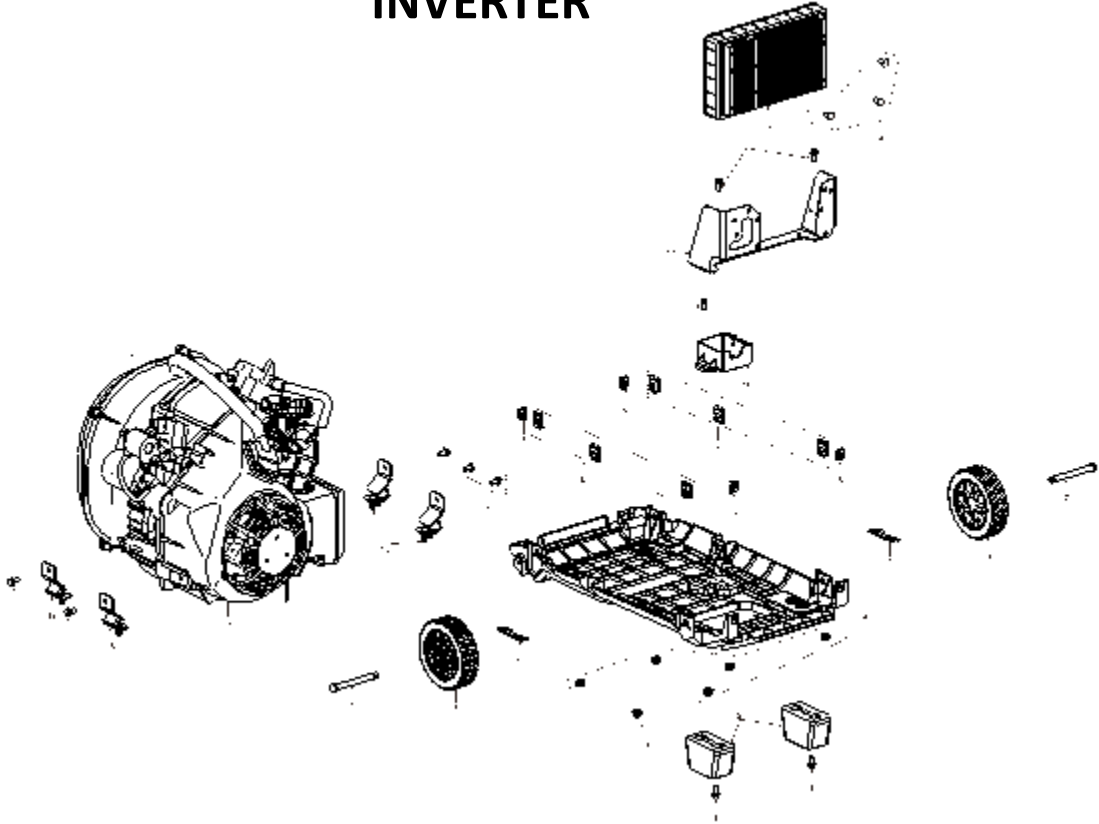
| NO. | DESCRIPTION | MAXWATT PART NUMBER |
|-----|---------------------------|---------------------|
| 1 | Muffler cover (front) | |
| 2 | Bolt M6×18 | |
| 3 | Muffler components | |
| 4 | Bolt M6×40 | |
| 5 | Locking nut with disc M6 | |
| 6 | Muffler cover (rear) | |
| 7 | Self tapping screw 4.2×16 | |

STARTER MOTOR



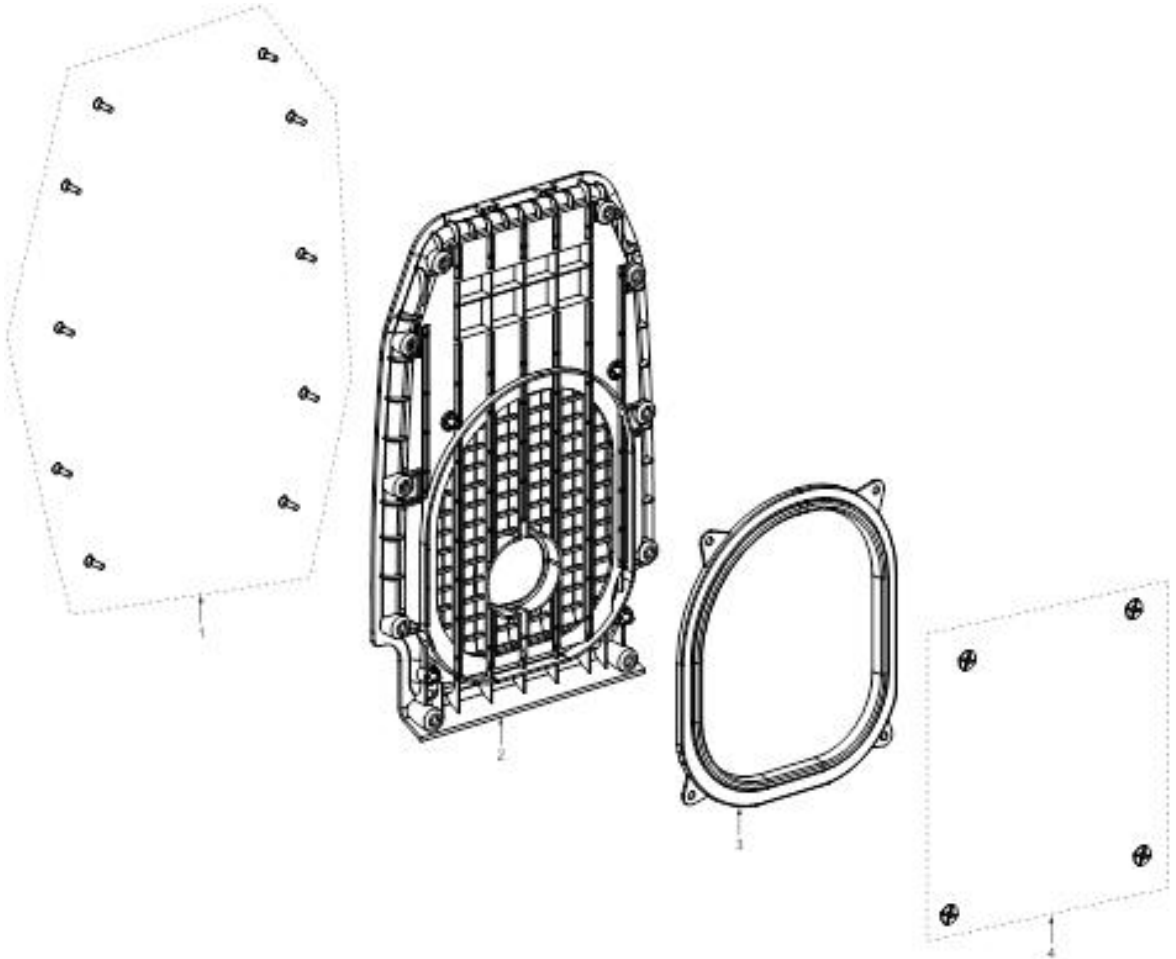
| NO. | DESCRIPTION | MAXWATT PART NUMBER |
|-----|----------------------|---------------------|
| 1 | Battery adapter wire | SP3800ISE-012 |
| 2 | Starting motor | SP3800ISE-013 |
| 3 | Locating pin | |
| 4 | Bolt | |

INVERTER



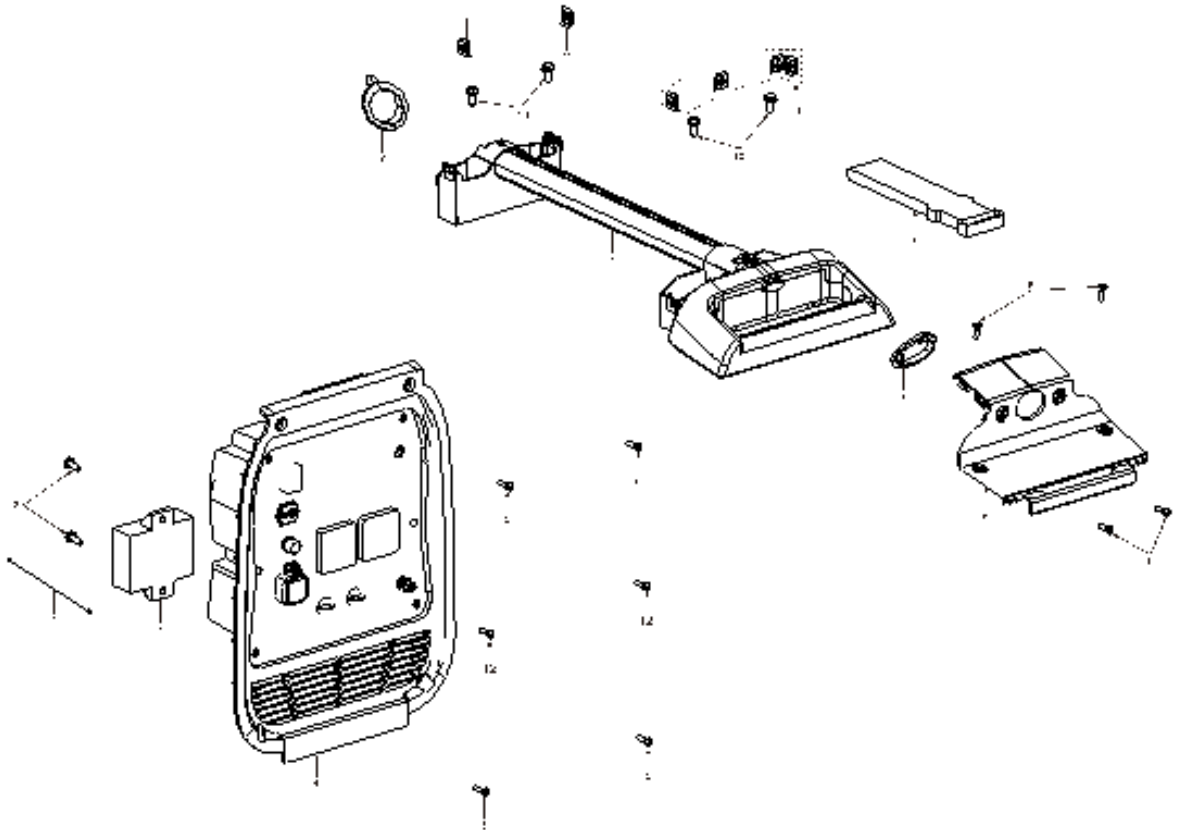
| NO. | DESCRIPTION | MAXWATT PART NUMBER |
|-----|--------------------------------------|---------------------|
| 1 | Bolt M6×25 | |
| 2 | Whole machine support seat | |
| 3 | Nut M6 | |
| 4 | Bottom plate components | |
| 5 | Nut M6 | |
| 6 | Nut M5 | |
| 7 | Axle | |
| 8 | Front wheel | |
| 9 | Speed control swing rod locking clip | |
| 10 | Variable voltage rectifier | SP3800ISE-014 |
| 11 | Bolt M5×16 | |
| 12 | Inverter bracket | |
| 13 | Bolt M6×16 | |
| 14 | Bolt M6×12 | |
| 15 | Inverter | SP3800ISE-015 |
| 16 | DK165F/P-1 | |
| 17 | Bolt M6×12 | |
| 18 | Shock pad | |

MUFFLER SHIELD



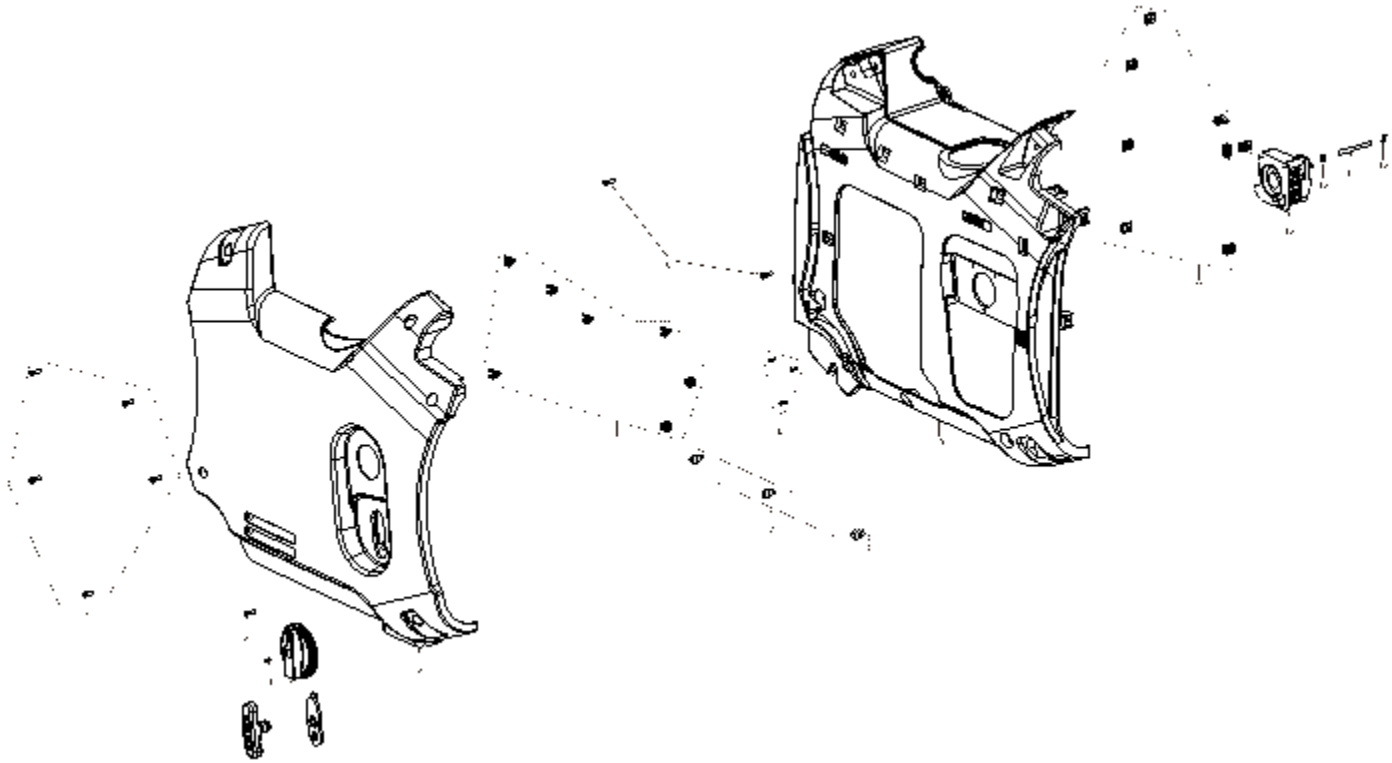
| NO. | DESCRIPTION | MAXWATT PART NUMBER |
|-----|----------------------------------|---------------------|
| 1 | Screw 5x16 | |
| 2 | Silencer cover | |
| 3 | Silencer sealant sleeve | |
| 4 | Plum blossom hole retaining ring | |

PANEL



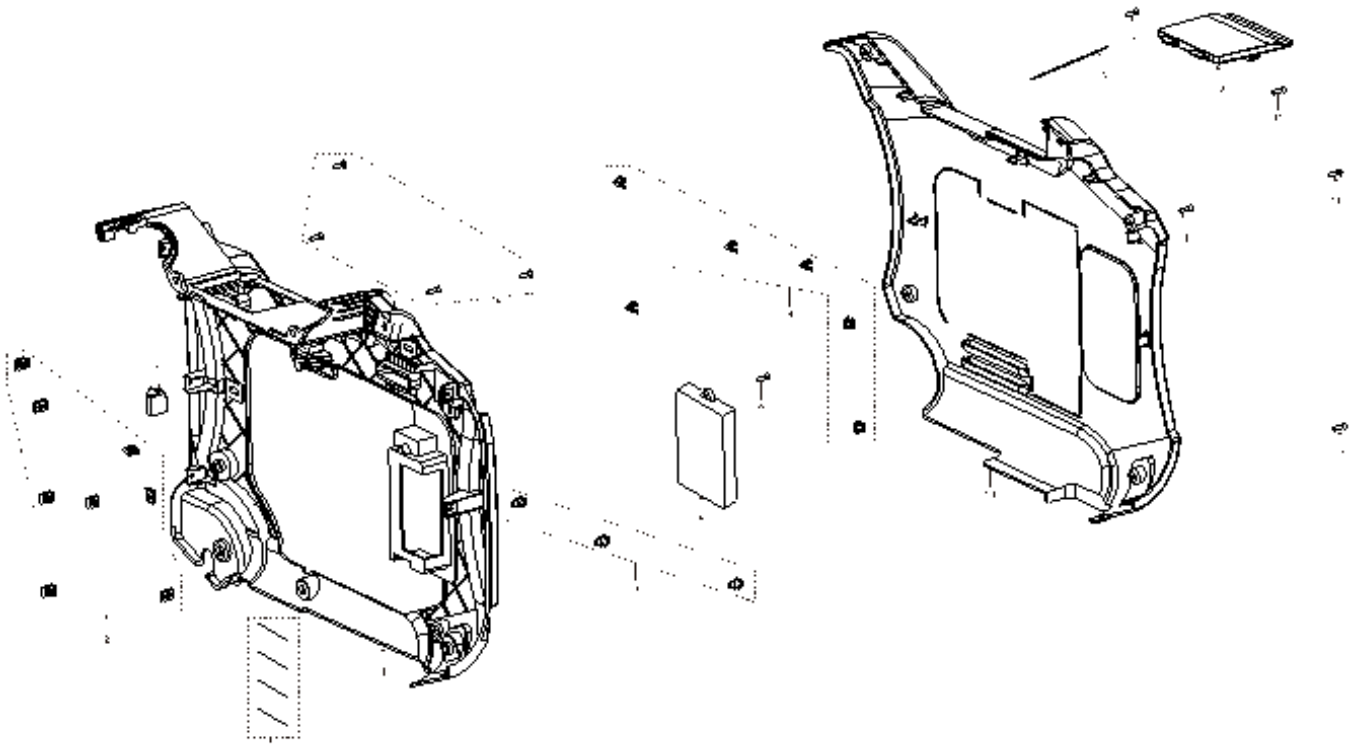
| NO. | DESCRIPTION | MAXWATT PART NUMBER |
|-----|---------------------------------------------|---------------------|
| 1 | Ground wire | |
| 2 | Bolt M5×16 | |
| 3 | One click remote control module | SP3800ISE-016 |
| 4 | Control Panel | SP3800ISE-017 |
| 5 | Screw 5×12 | |
| 6 | Panel seat cover | |
| 7 | Pull rod front and rear limit rubber sleeve | |
| 8 | Tie rod assembly | SP3800ISE-018 |
| 9 | Remote control strap | |
| 10 | Screw 6×12 | |
| 11 | Nut M5 | |
| 12 | Screw 5×16 | |

LEFT EXTERIOR PANEL



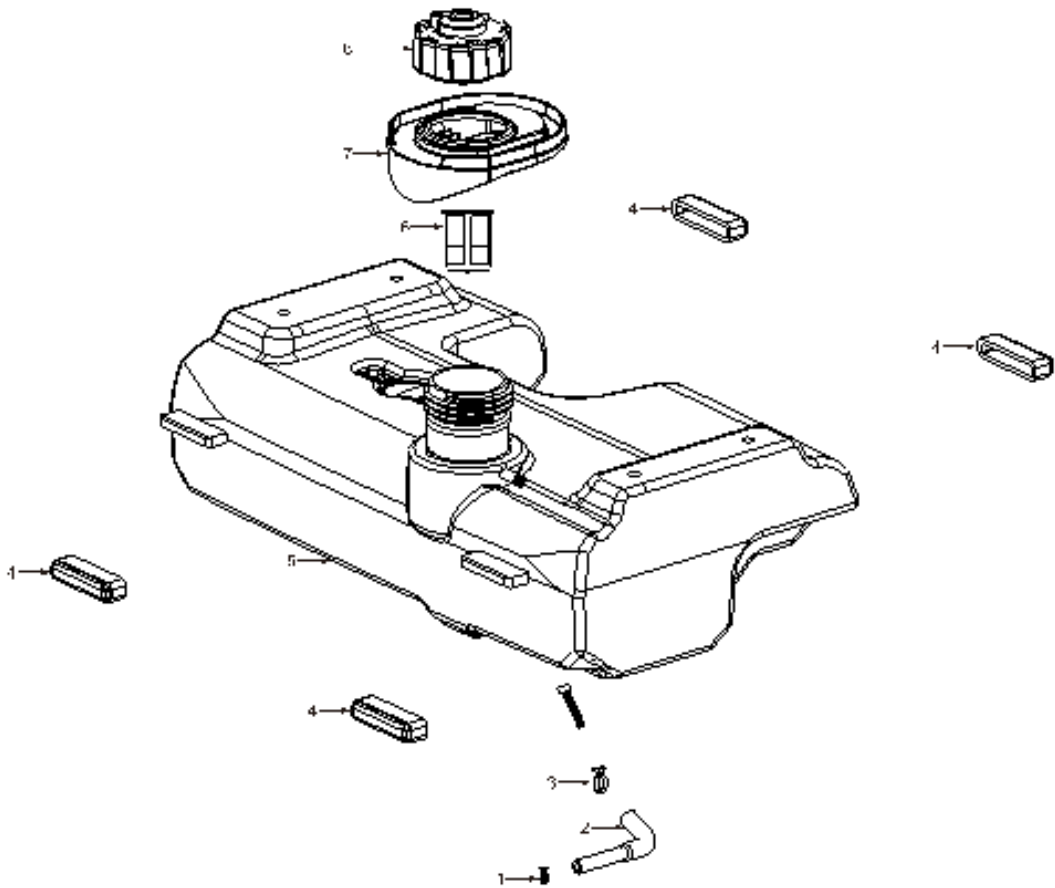
| NO. | DESCRIPTION | MAXWATT PART NUMBER |
|-----|------------------------------|---------------------|
| 1 | Screw 5×10 | |
| 2 | Screw 5×12 | |
| 3 | Screw M4×14 | |
| 4 | Three in one switch handle | SP3800ISE-019 |
| 5 | Left exterior cover plate | SP3800ISE-020 |
| 6 | Clip card | |
| 7 | Bolt M6×16.5 | |
| 8 | Screw 5×16 | |
| 9 | Screw 4.2×1 | |
| 10 | Left shell | |
| 11 | Nut M5 | |
| 12 | Three in one switch | SP3800ISE-021 |
| 13 | Belt shaped tubing clamp Φ8 | |
| 14 | Oil pipe | |
| 15 | Belt shaped tubing clamp Φ10 | |

RIGHT EXTERIOR PANEL



| NO. | DESCRIPTION | MAXWATT PART NUMBER |
|-----|----------------------------|---------------------|
| 1 | Bottom plate components | |
| 2 | Nut M5 | |
| 3 | Engine buffer pad | |
| 4 | Right shell | |
| 5 | Bolt M6×16.50 | |
| 6 | lithium battery | SP3800ISE-022 |
| 7 | Screw 5×16 | |
| 8 | Bolt M5×16 | |
| 9 | Clip | |
| 10 | Right exterior cover plate | SP3800ISE-023 |
| 11 | Screw 5×10 | |
| 12 | Spark plug cover plate | |
| 13 | Anti loss rubber strip | |

FUEL TANK



| NO. | DESCRIPTION | MAXWATT PART NUMBER |
|-----|------------------------------------|---------------------|
| 1 | Belt shaped tubing clamp $\Phi 8$ | |
| 2 | Forming oil pipe | |
| 3 | Belt shaped tubing clamp $\Phi 11$ | |
| 4 | Fuel tank support gasket | |
| 5 | Fuel tank components | SP3800ISE-024 |
| 6 | Fuel screen | SP3800ISE-025 |
| 7 | Oil injection port rubber sleeve | |
| 8 | Fuel tank cap | SP3800ISE-026 |
| | Fuel FILTER | SP3800ISE-027 |

SPARE PARTS AND SERVICING

WHERE DO I TAKE MY PRODUCT FOR SERVICE OR REPAIR?

Please contact MaxWatt at customercare@maxwatt.com.au we can provide after-sales support for your generator.

Should you experience any problems with your generator, it is recommended that you consult the troubleshooting guide in the Instruction Manual first before contacting us. The most common issues can be resolved quickly in this manner without the inconvenience of having to take your generator to a service agent.

ARE SPARE PARTS AVAILABLE FOR PURCHASE?

Yes, we carry a full range of spare parts for all products. Please check our catalogue for a full list of spare parts and contact us if you need to order anything.

Distributed by:



Shop 15/1440 New Cleveland Rd, Chandler QLD 4155

(07) 3732 5363

customercare@maxwatt.com.au