

MAXWATT®

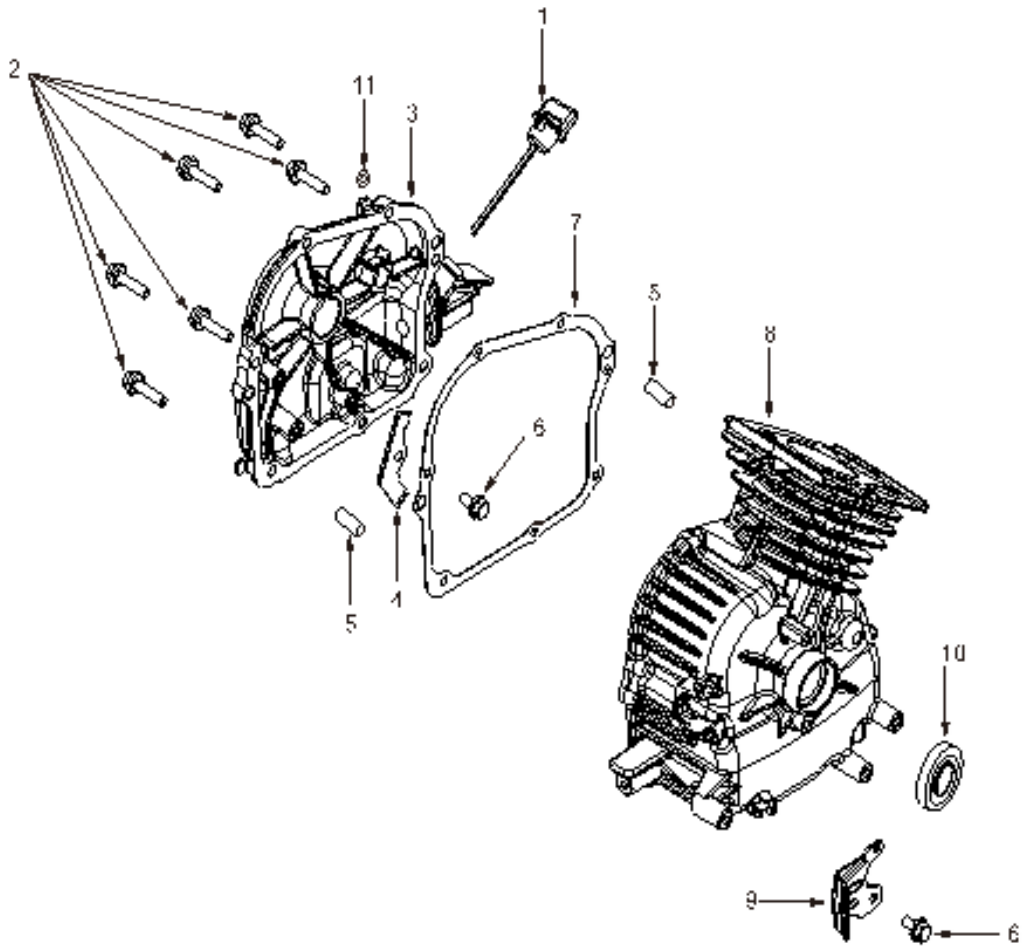
POWER WHEN YOU NEED IT

SPARE PARTS CATALOGUE



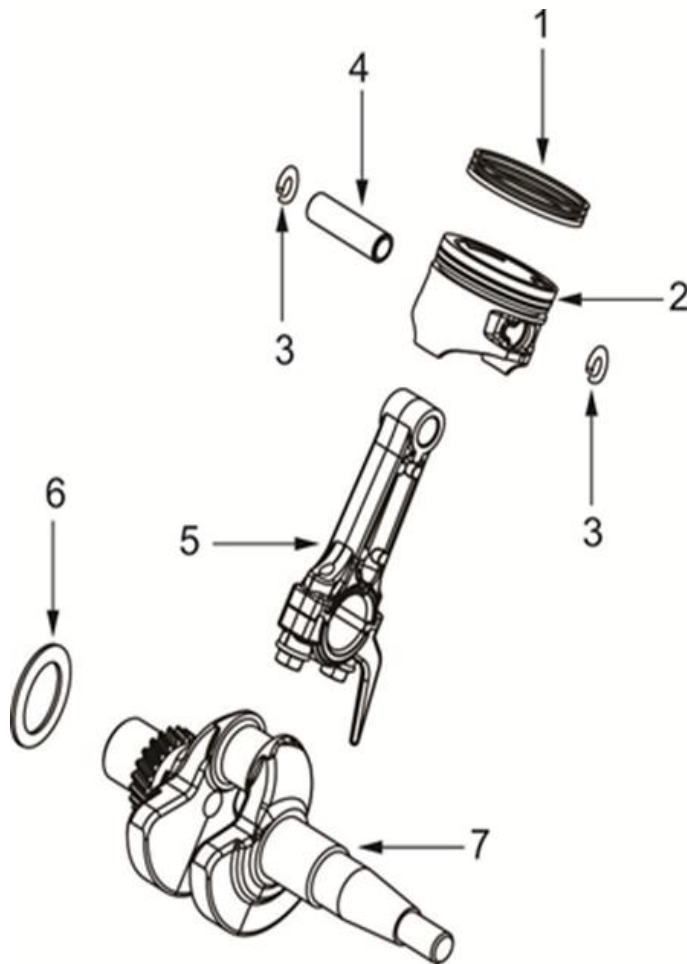
MX2000ISR

CRANKCASE



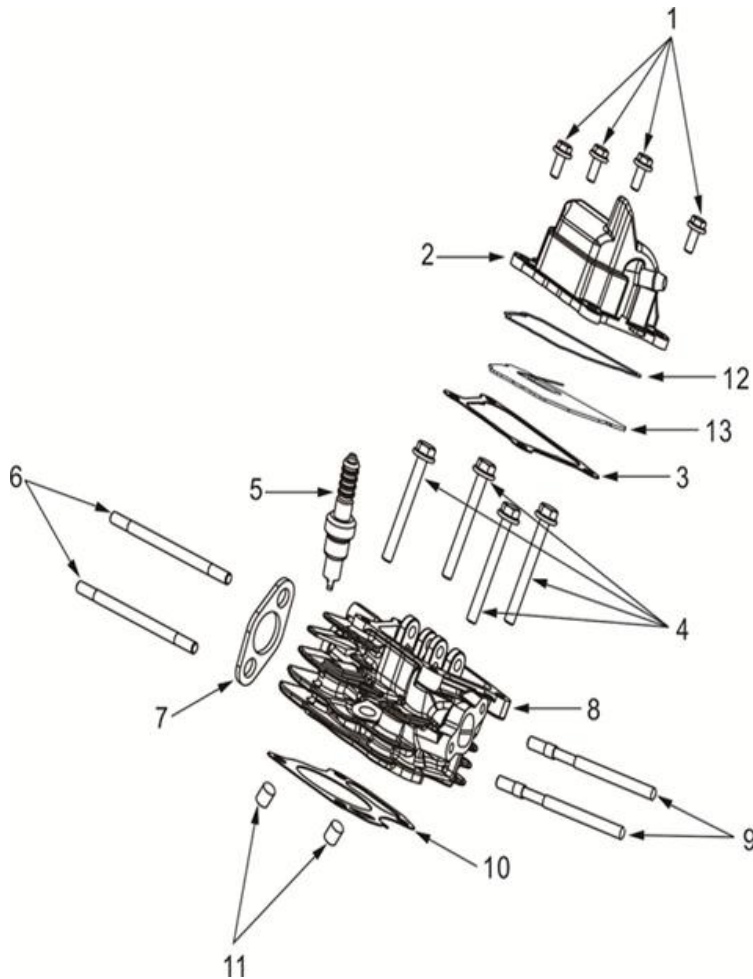
NO.	DESCRIPTION	MAXWATT PART NUMBER
1	Dipstick subassembly, Oil	
2	Bolt	
3	Over subassembly, Crankcase	
4	Oil alarm block	
5	Pin	
6	Bolt	
7	Over subassembly, Crankcase	
8	Crankcase subassembly	
9	Crimping board	
10	oil seal	
11	Plain washer	

CRANKSHAFT



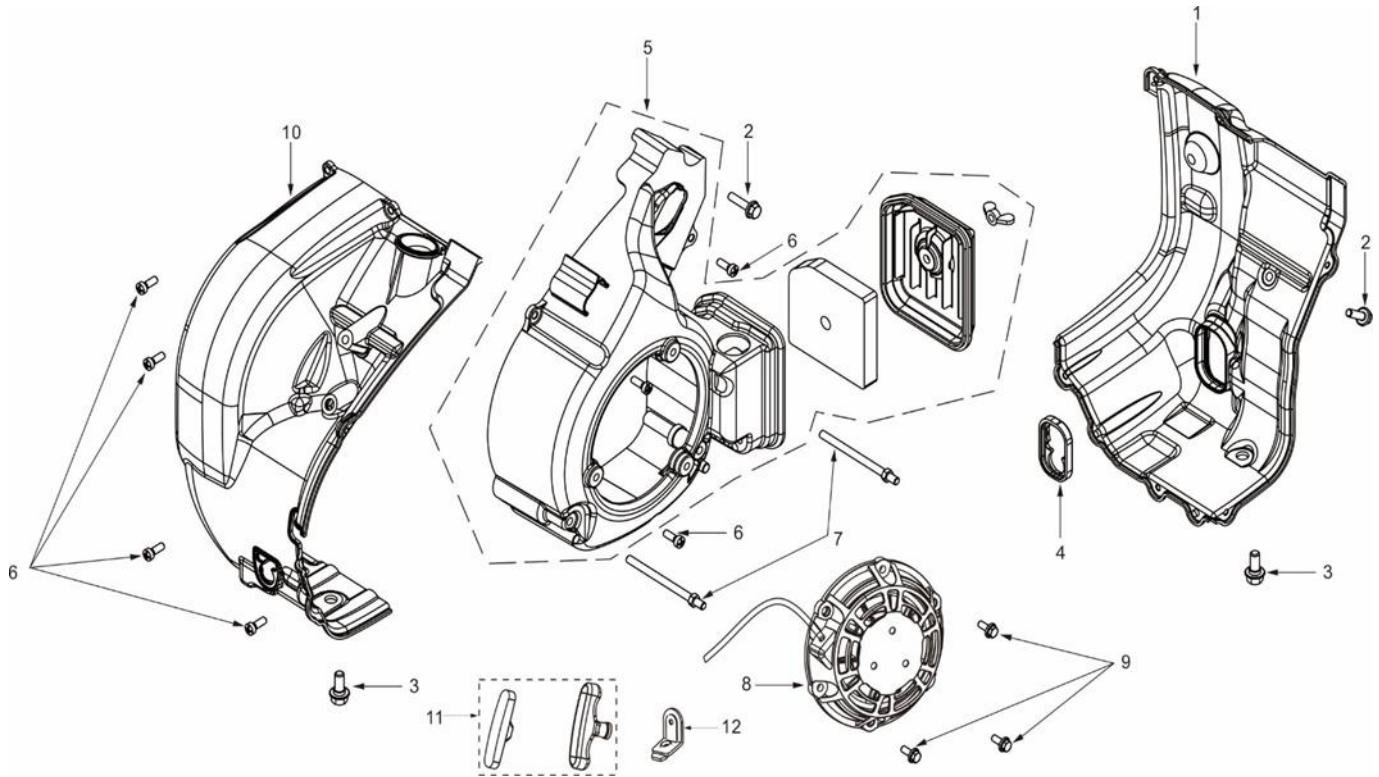
NO.	DESCRIPTION	MAXWATT PART NUMBER
1	Ring set, Oil	
2	Piston	
3	Clip, Piston pin	
4	Pin, Piston	
5	Rod, Connecting	
6	Crankshaft gasket	
7	Crankshaft assy	

CYLINDER HEAD ASSEMBLY



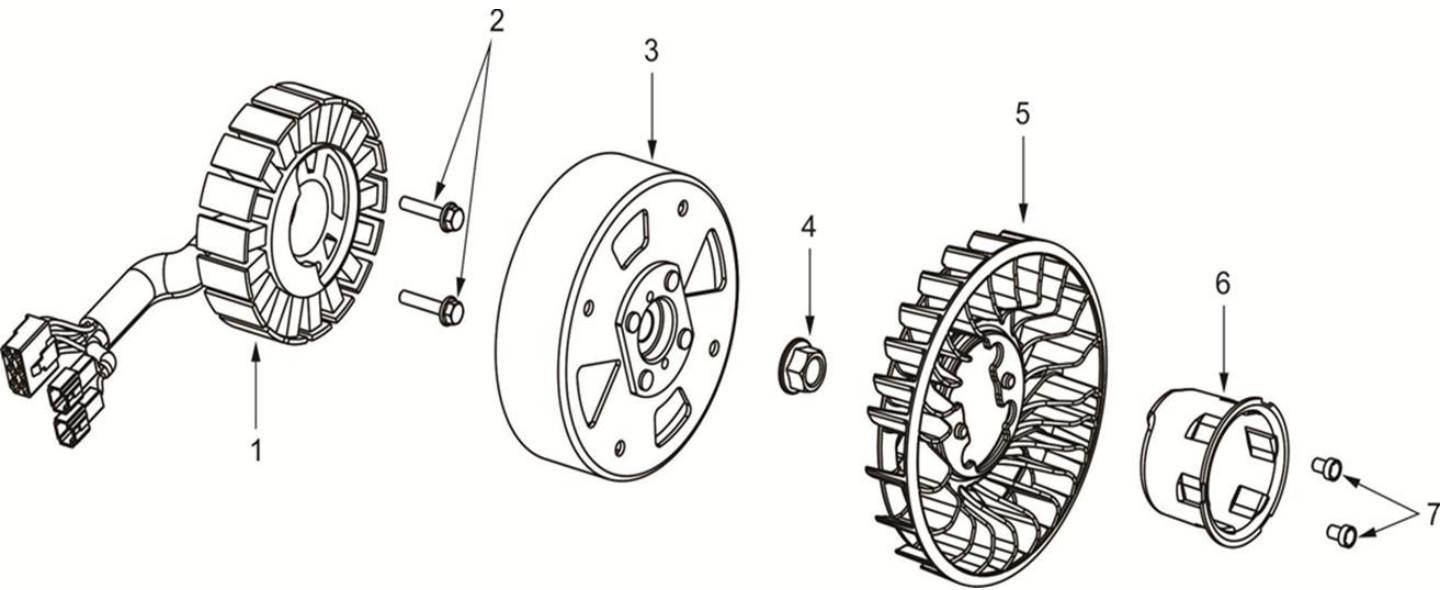
NO.	DESCRIPTION	MAXWATT PART NUMBER
1	Bolt	
2	Cover subassembly,Cylinder head	SP2000ISR-001
3	Gasket,Cover subassembly	SP2000ISR-002
4	Bolt	
5	Plug,Spark	SP2000ISR-003
6	Bolt	
7	Gasket,Exhaust outlet	
8	Cylinder head	
9	Bolt	
10	Gasket,Cylinder head	
11	Pin	
12	Limit plate gasket	SP2000ISR-001
13	Breathing valve limit plate	

ENGINE STARTER



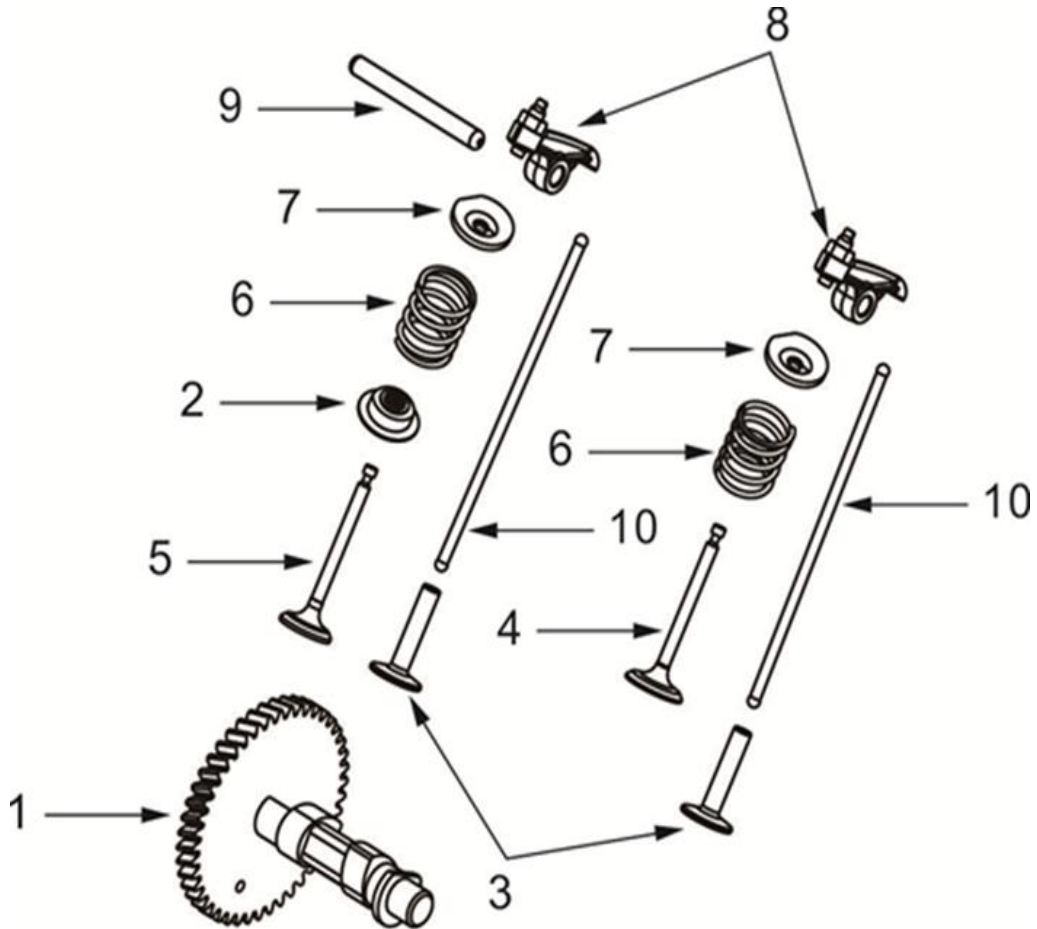
NO.	DESCRIPTION	MAXWATT PART NUMBER
1	Rear shield housing	
2	Bolt	
3	Bolt	
4	Rubber sleeve of rear shield	
5	Air filter assembly	SP2000ISR-004
6	Self tapping screw	
7	Stud support bolt	
8	Pulling plate	SP2000ISR-005
9	Bolt	
10	Front shield housing	
11	Starting handle	SP2000ISR-006
12	Handle cover plate	

ELECTRICAL COMPONENTS



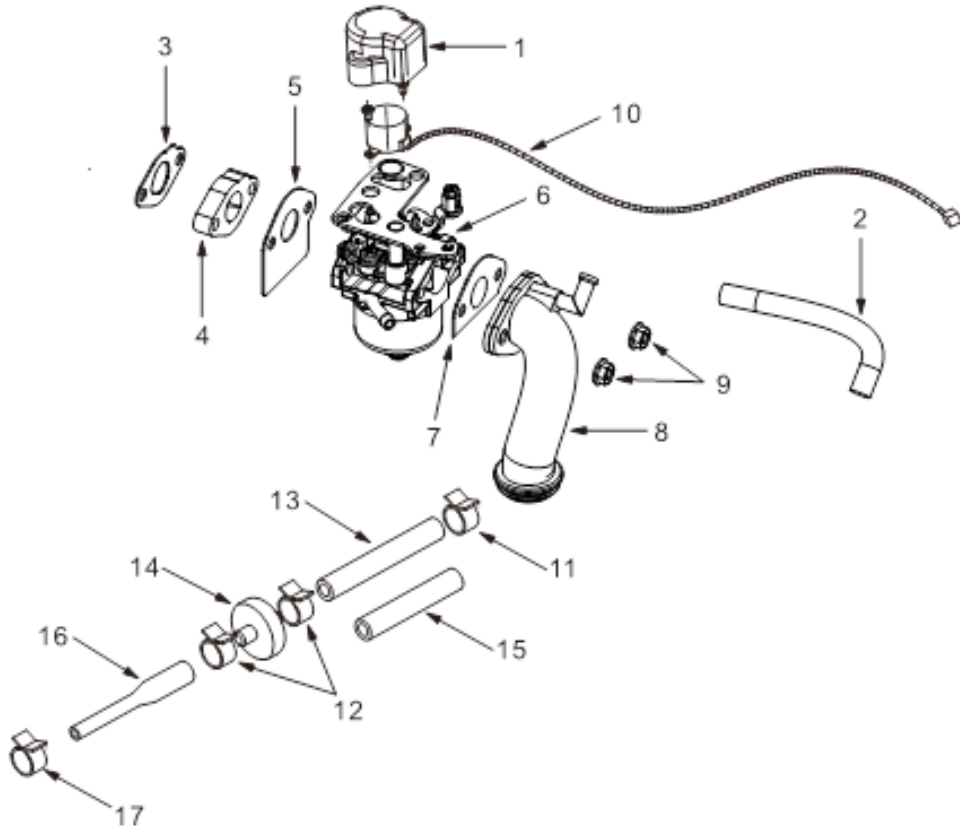
NO.	DESCRIPTION	MAXWATT PART NUMBER
1	Motor stator	
2	Bolt	
3	Motor rotor	
4	Rotor comp	
5	Fan blade	
6	Starting sleeve	
7	Hexagon socket bolt	

CAMSHAFT



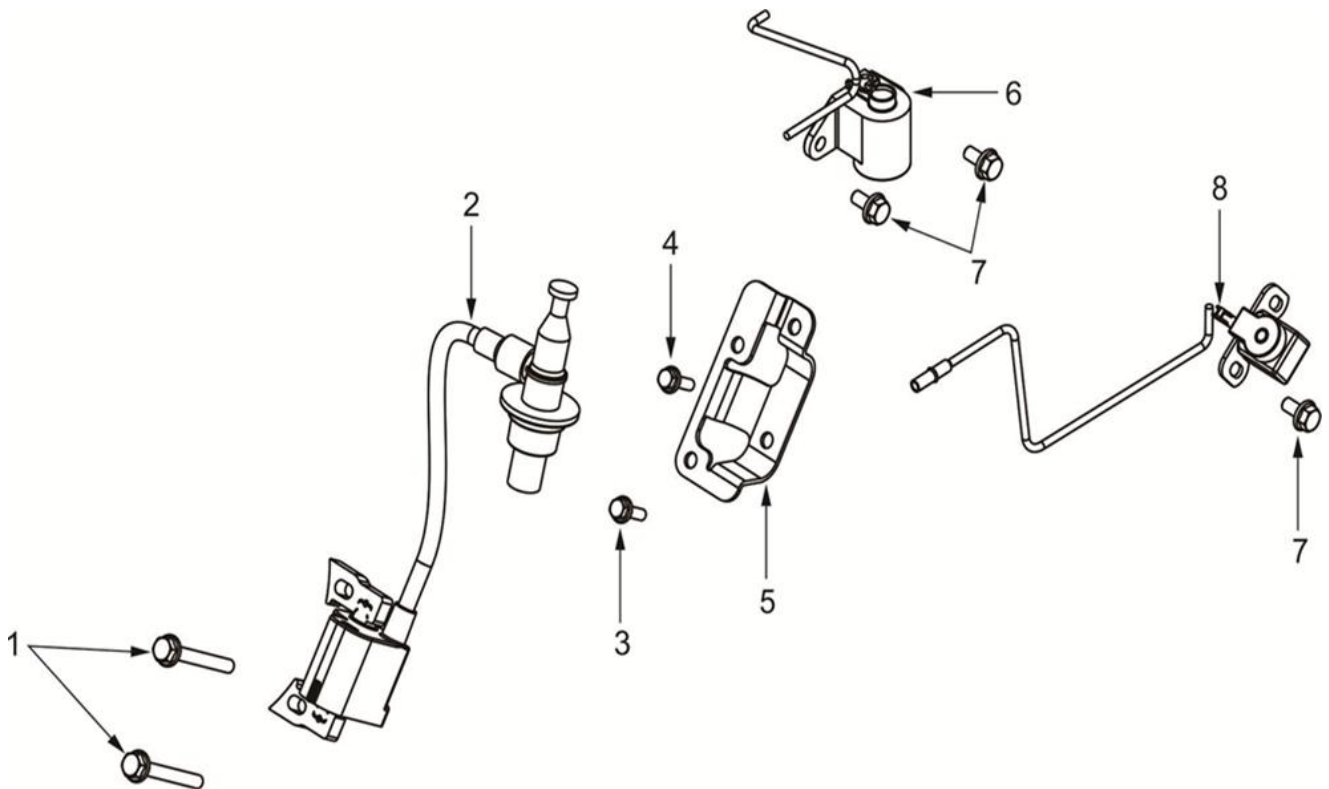
NO.	DESCRIPTION	MAXWATT PART NUMBER
1	Camshaft assy	
2	Oil baffle	
3	Rods	
4	Intake valve	
5	Exhaust valve	
6	Valve spring	
7	Valve-spring seat	
8	Valve rocker	
9	Valve rocker shaft	
10	Tappet	
		SP2000ISR-007

CARBURETTOR



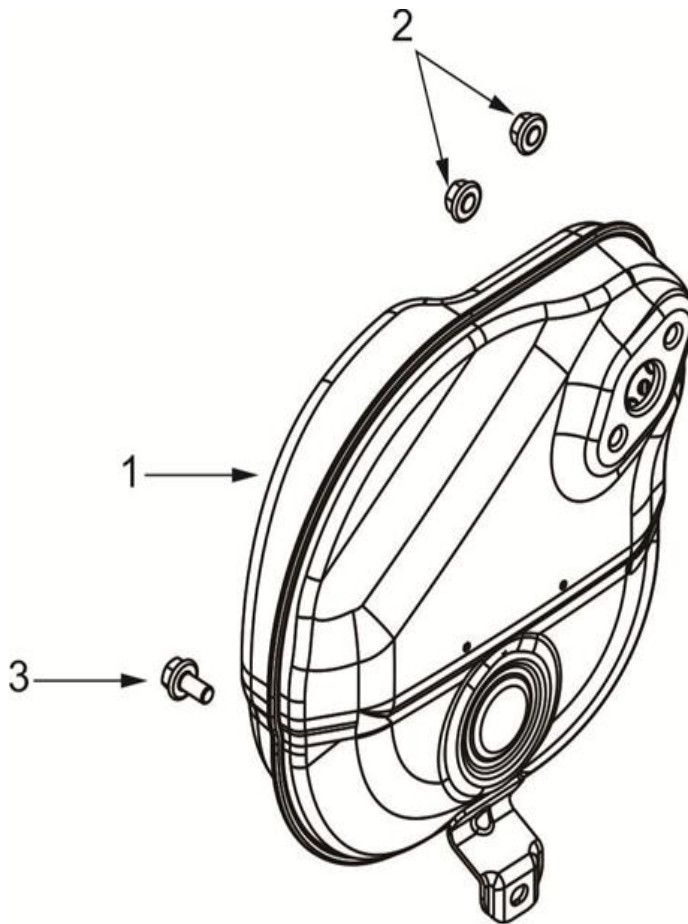
NO.	DESCRIPTION	MAXWATT PART NUMBER
1	Stepper motor cover	SP2000ISR-008
2	Exhaust pipe	
3	Air inlet gasket	SP2000ISR-008
4	Carburetor heat shield	
5	Carburetor insulation pad	
6	Carburetor	
7	Carburetor gasket	
8	Intake hose	
9	Locking nut with disc	
10	Stepper motor	SP2000ISR-008
11	Ribbon tubing clamp	
12	Ribbon tubing clamp	
13	Fuel pipe	SP2000ISR-009
14	Fuel filter	SP2000ISR-010
15	Silicone protective sleeve	SP2000ISR-009
16	Fuel pipe U-shaped	SP2000ISR-011
17	Ribbon tubing clamp	

STARTER



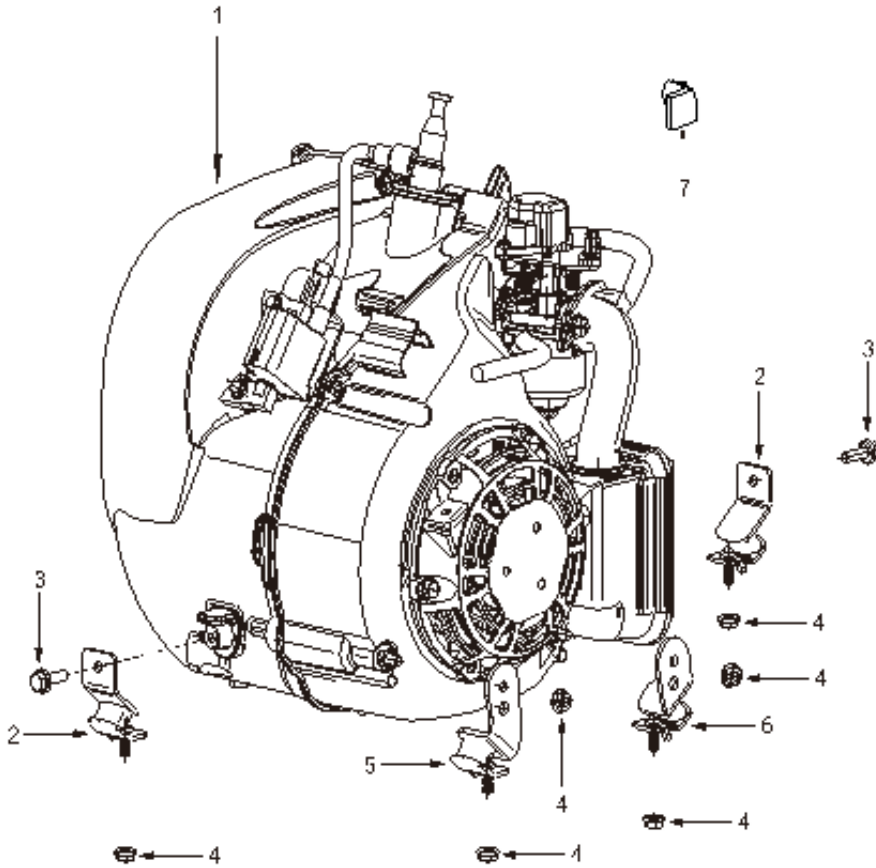
NO.	DESCRIPTION	MAXWATT PART NUMBER
1	Bolt	
2	Ignition coil	SP2000ISR-012
3	Bolt	
4	Bolt	
5	Igniter mounting bracket	
6	Oil alarm	
7	Bolt	
8	Trigger coil assembly	SP2000ISR-013

MUFFLER



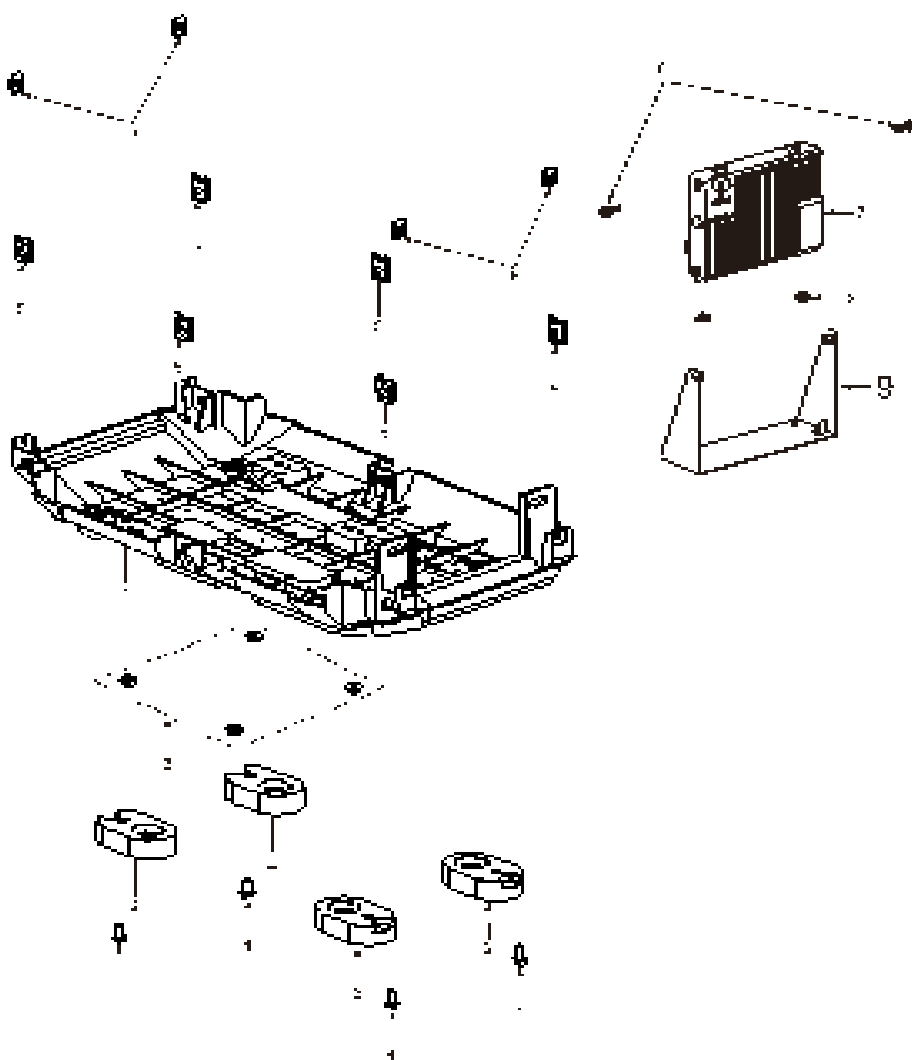
NO.	DESCRIPTION	MAXWATT PART NUMBER
1	Muffler	SP2000ISR-014
2	Locking nut with disc	
3	Bolt	

ENGINE



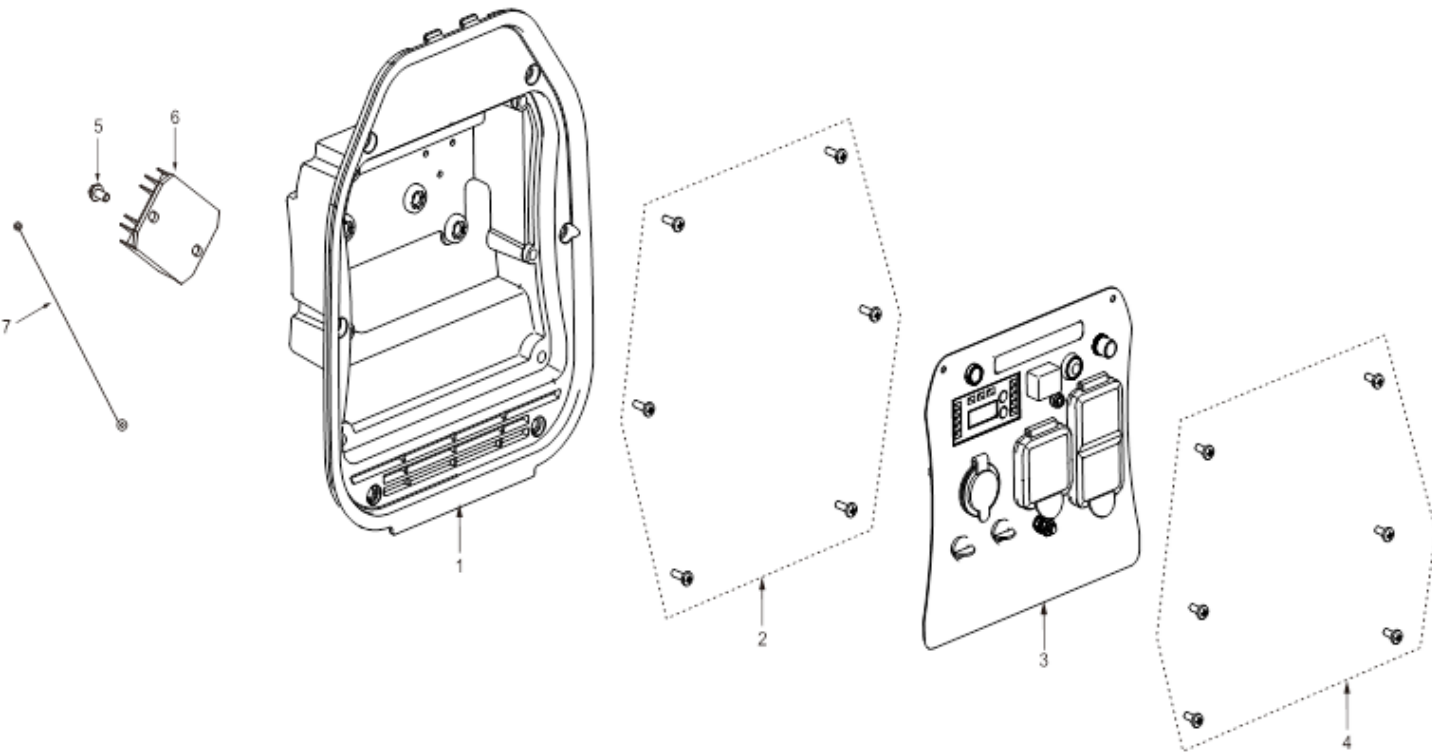
NO.	DESCRIPTION	MAXWATT PART NUMBER
1	Engine	
2	Shock pad	
3	Bolt	
4	Nut	
5	Shock mount	
6	Shock mount	
7	sheath	

INVERTER



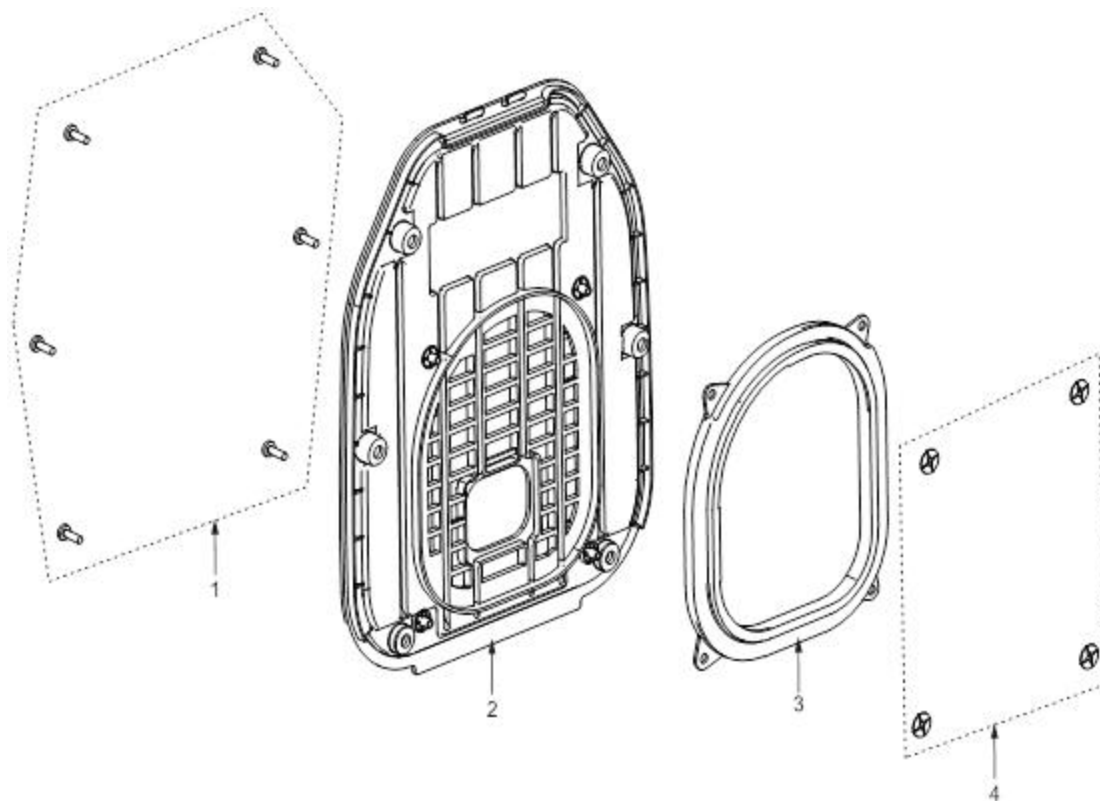
NO.	DESCRIPTION	MAXWATT PART NUMBER
1	Bolt M6×18	
2	Shock absorber	
3	Nut M6	
4	Base plate	
5	Nut M6	
6	Nut M5	
7	Inverter	SP2000ISR-015
8	Bolt M6×14	
9	Inverter bracket	

PANEL



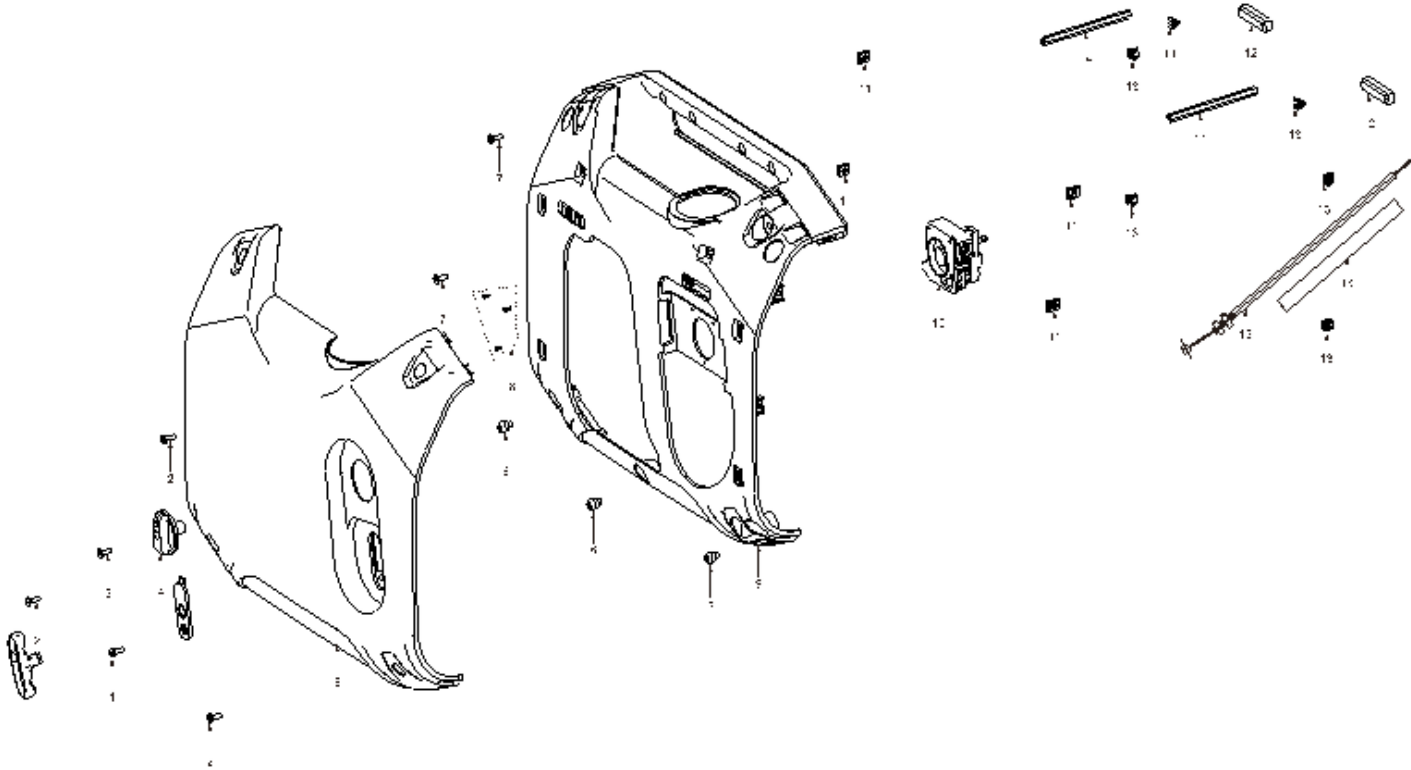
NO.	DESCRIPTION	MAXWATT PART NUMBER
1	Panel bed	
2	Screw M5×16	
3	Control Panel	SP2000ISR-016
4	Screw M5×10	
5	Bolt M6×14	
6	Variable voltage rectifier	SP2000ISR-017
7	Ground wire	
	Digital Display	SP2000ISR-018

MUFFLER SHIELD



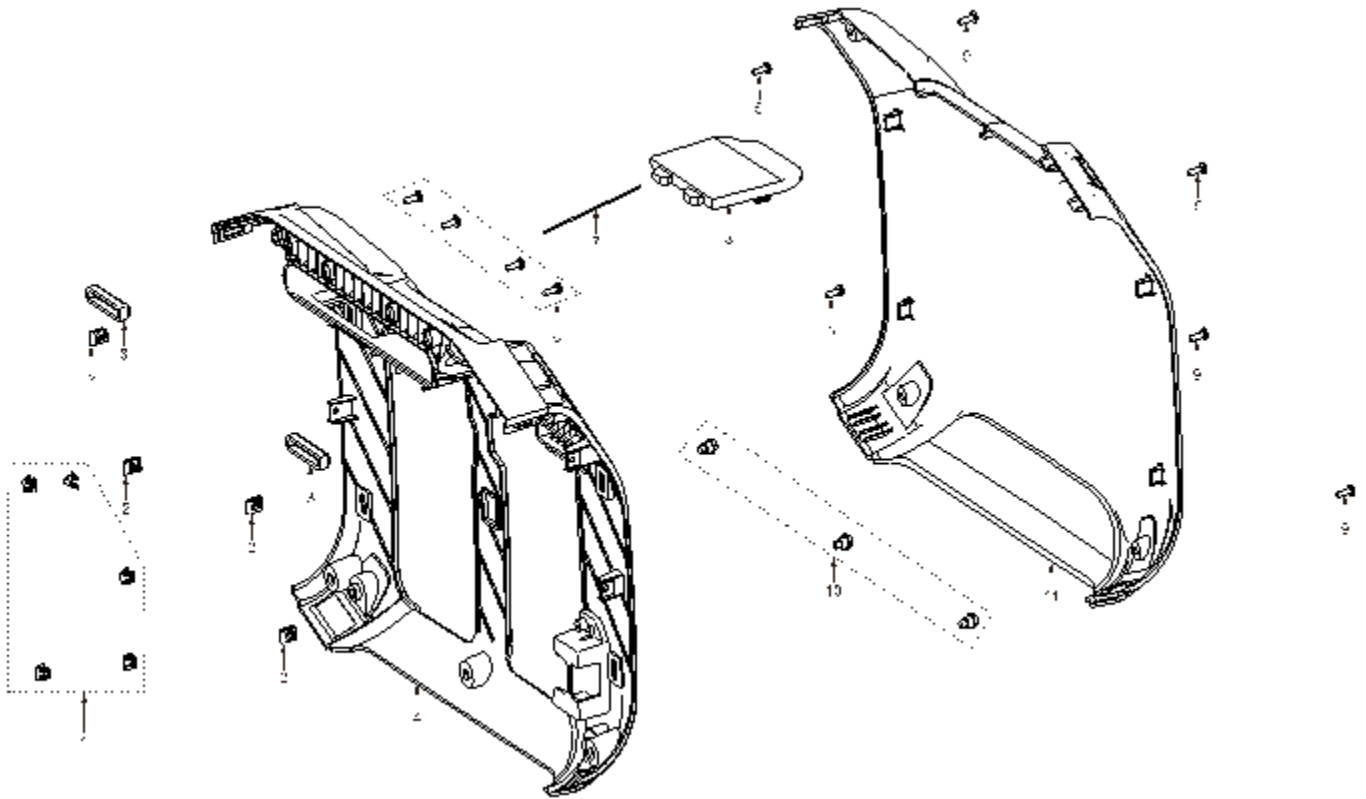
NO.	DESCRIPTION	MAXWATT PART NUMBER
1	Screw M5×16	
2	Muffler shield	
3	Muffler sealant sleeve	
4	Plum ring	

LEFT EXTERIOR COVER



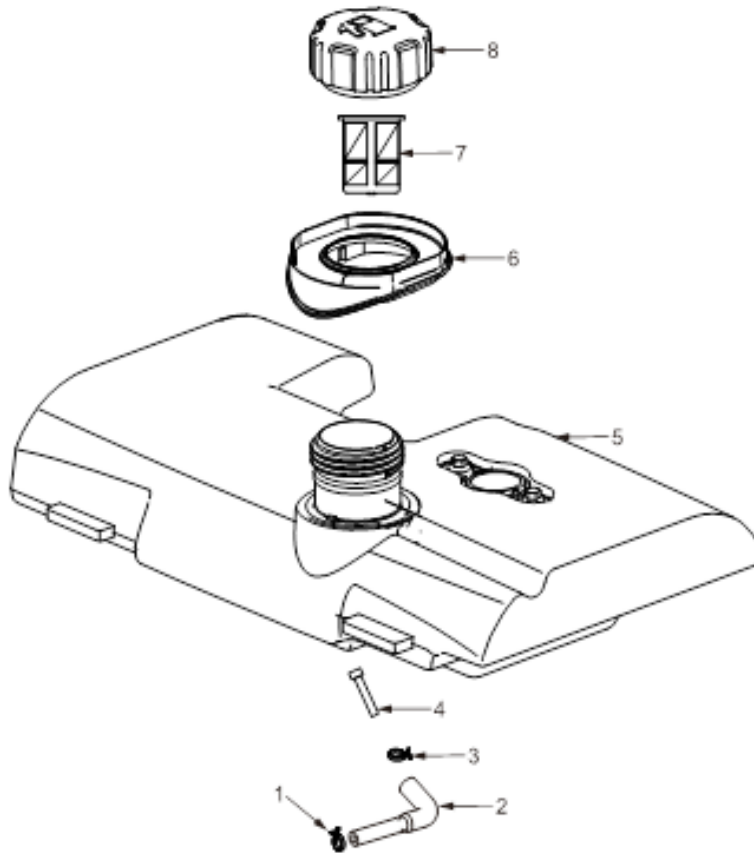
NO.	DESCRIPTION	MAXWATT PART NUMBER
1	Screw M5×10	
2	Screw M5×10	
3	Screw M4×14	
4	3-in-1 switch handle	SP2000ISR-019
5	Ornament shell	SP2000ISR-020
6	Bolt M6×16.5	
7	Screw M5×16	
8	Screw M4.2×12	
9	Left shell	
10	Three-in-one switch	SP2000ISR-021
11	Nut M5	
12	Tank support rubber pad	
13	Clamping card	
14	Hexagonal double stud length 120mm	
15	Cable assembly	SP2000ISR-022
16	Silicone case Φ6*320	

RIGHT EXTERIOR COVER



NO.	DESCRIPTION	MAXWATT PART NUMBER
1	Clamping card	
2	Nut M5	
3	Tank support rubber pad	
4	Right shell	
5	Screw M5×16	
6	Bolt M5×16	
7	Anti-loss rubber strip	
8	Spark plug cover plate	
9	Screw M5×10	
10	Bolt M6×16.5	
11	Right exterior cover	SP2000ISR-023

FUEL TANK



NO.	DESCRIPTION	MAXWATT PART NUMBER
1	Ferrule $\Phi 8$	
2	Oil tube	SP2000ISR-024
3	Ferrule $\Phi 11$	
4	Fuel filter	SP2000ISR-025
5	Fuel Tank	SP2000ISR-026
6	Sheath	
7	Fuel screen	SP2000ISR-027
8	Tank cap	SP2000ISR-028