

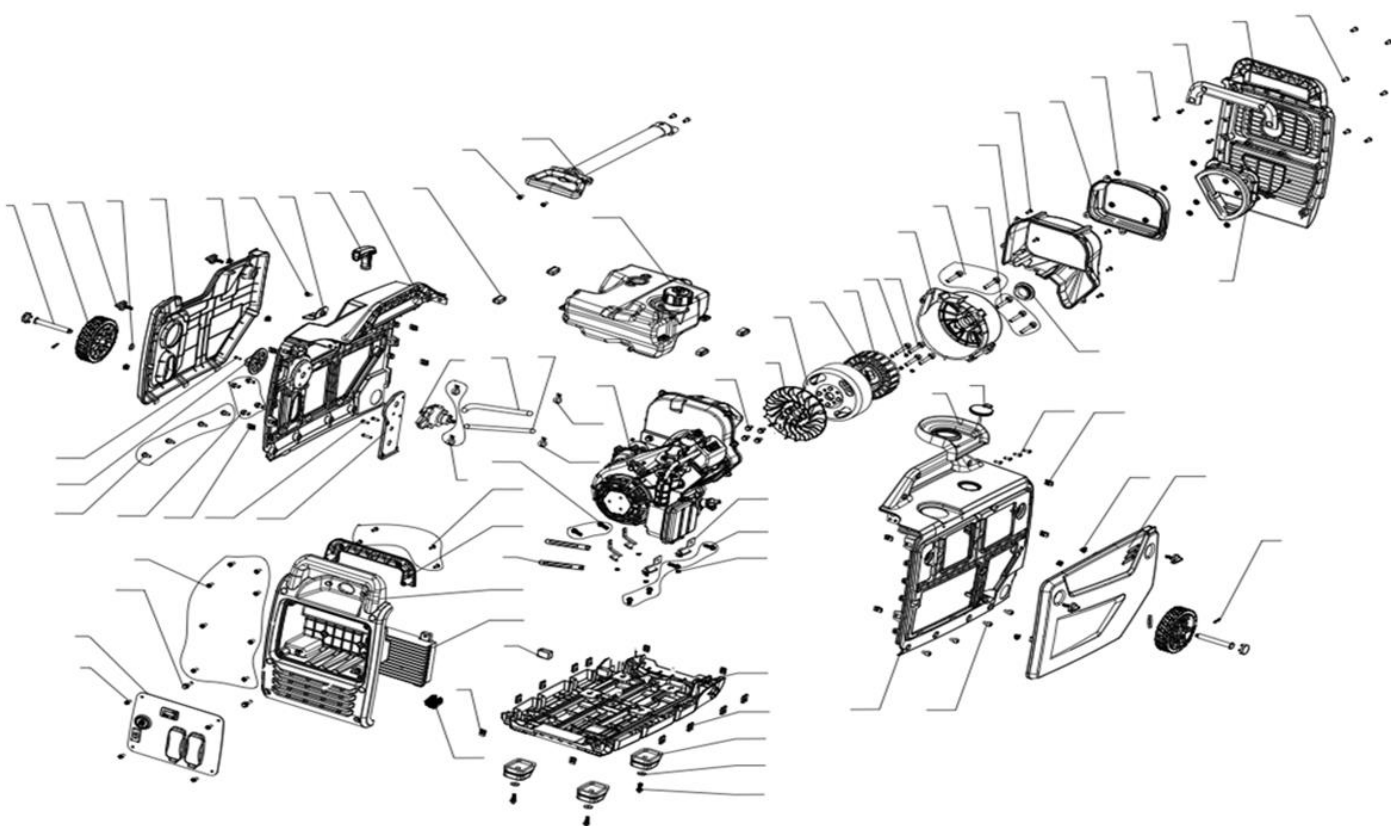


## SPARE PARTS CATALOGUE



*MX3000iS*

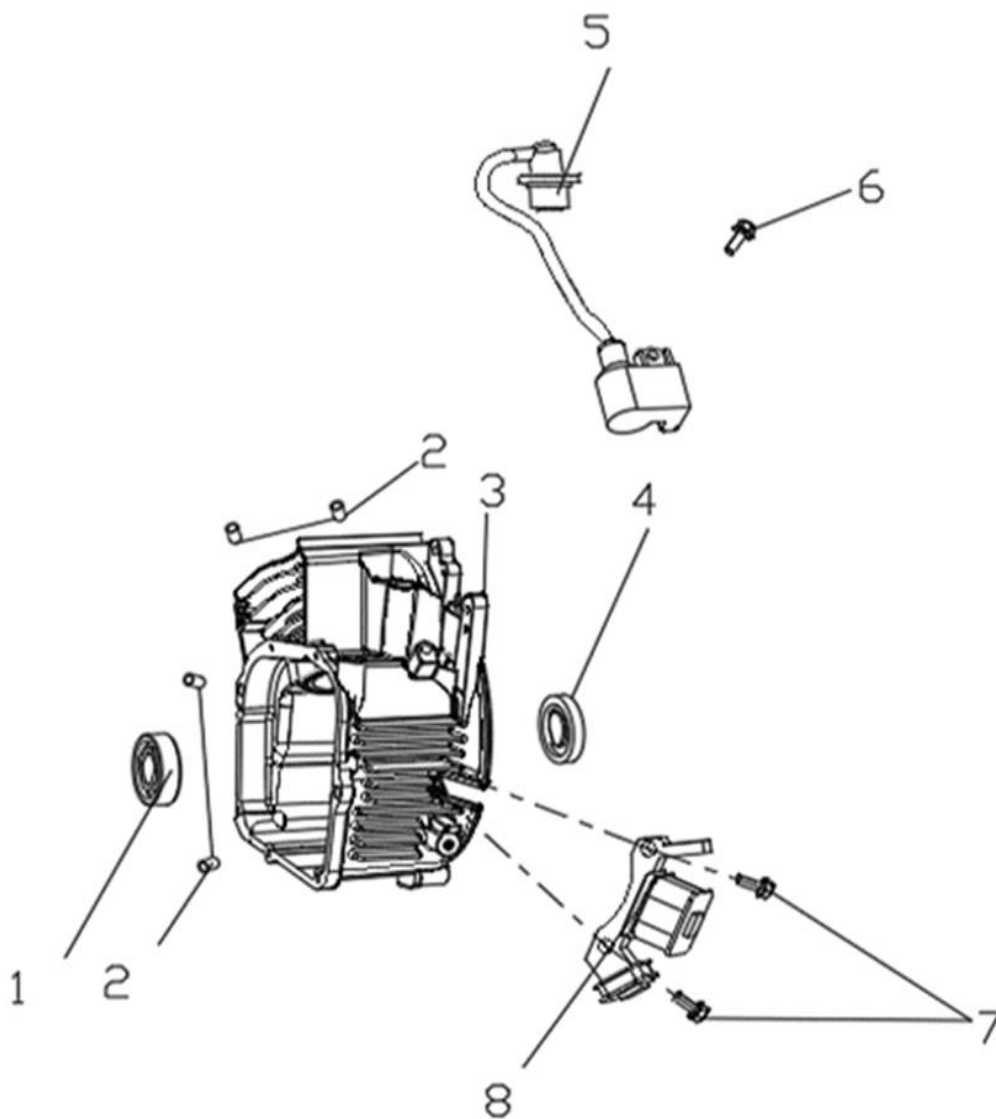
## COMPONENTS





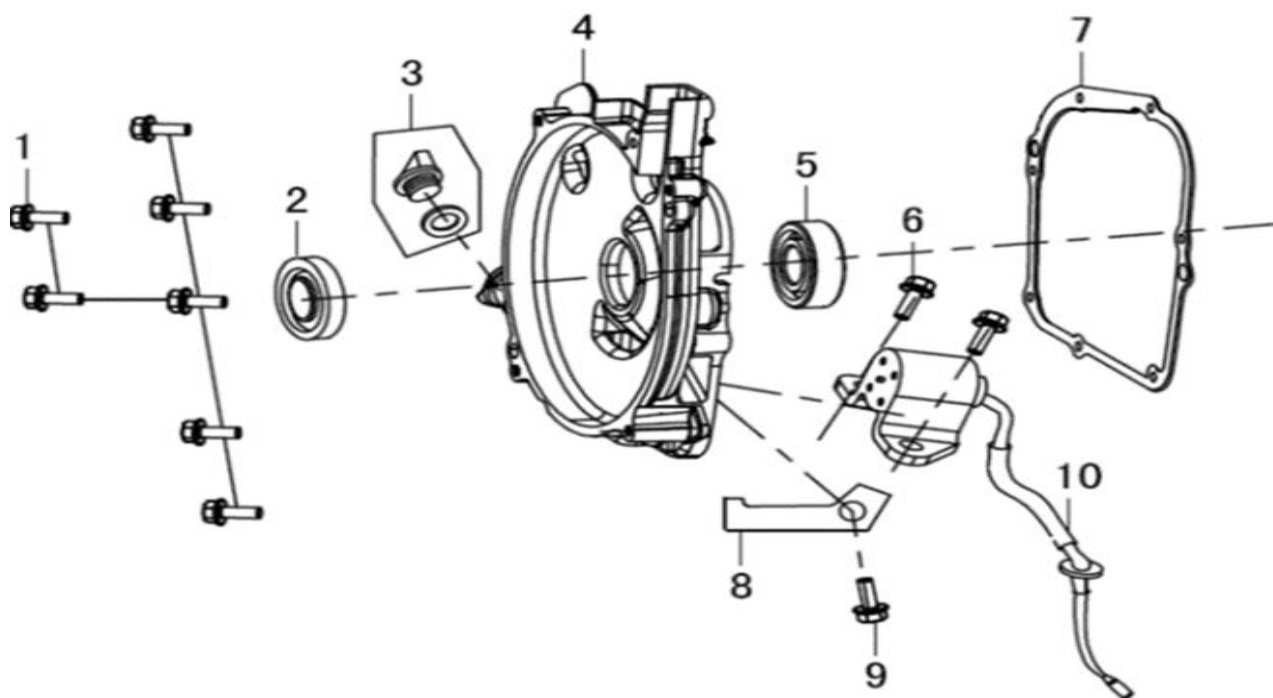
NO.	DESCRIPTION	MAXWATT PART NUMBER
1	Wheel	SP3000IS-101
2	Hand-tight rotary knob	
3	Wheel Spacer	
4	Front Cover	SP3000IS-118
5	Spring Clip	
6	Cross Recessed Pan Head Screw M5*10	
7	Handler Plate	SP3000IS-125
8	Pull Starter	SP3000IS-102
9	Front Shell	SP3000IS-117
10	Cross Recessed Pan Head Screw M4*12	
11	Switch Rotary Knob	SP3000IS-119
12	Hexagon Socket Pan Head Bolt	
13	Hexagon Bolts with Flange M6X20	
14	Clip Nut M5	
15	Cross Recessed Pan Head Screw M5*10	
16	Three-in-one Switch Positioning Base	
17	Fuel Tank Rubber Cover	
18	Cross Recessed Pan Head Screw M5*14	
19	Pull Rod	SP3000IS-121
20	Three-in-one Switch	SP3000IS-120
21	Fuel Pipe/Φ5xΦ10x160	SP3000IS-123
22	Fuel Pipe/Φ5xΦ10×Φ7xΦ12x145	SP3000IS-124
23	Replacement Engine	SP3000IS-103
24	Hexagon Bolts with Flange M6X18	
25	Fan	SP3000IS-104
26	Rotor of Alternator	SP3000IS-105
27	Hexagon Nut with Flange M12	
28	Stator of Alternator	
29	Spring Washer/Φ5	
30	Hexagon Bolts with Flange M5*45	
31	Alternator Housing	
32	Hexagon Bolts with Flange M6*40	

## CYLINDER CRANK CASE ASSEMBLY



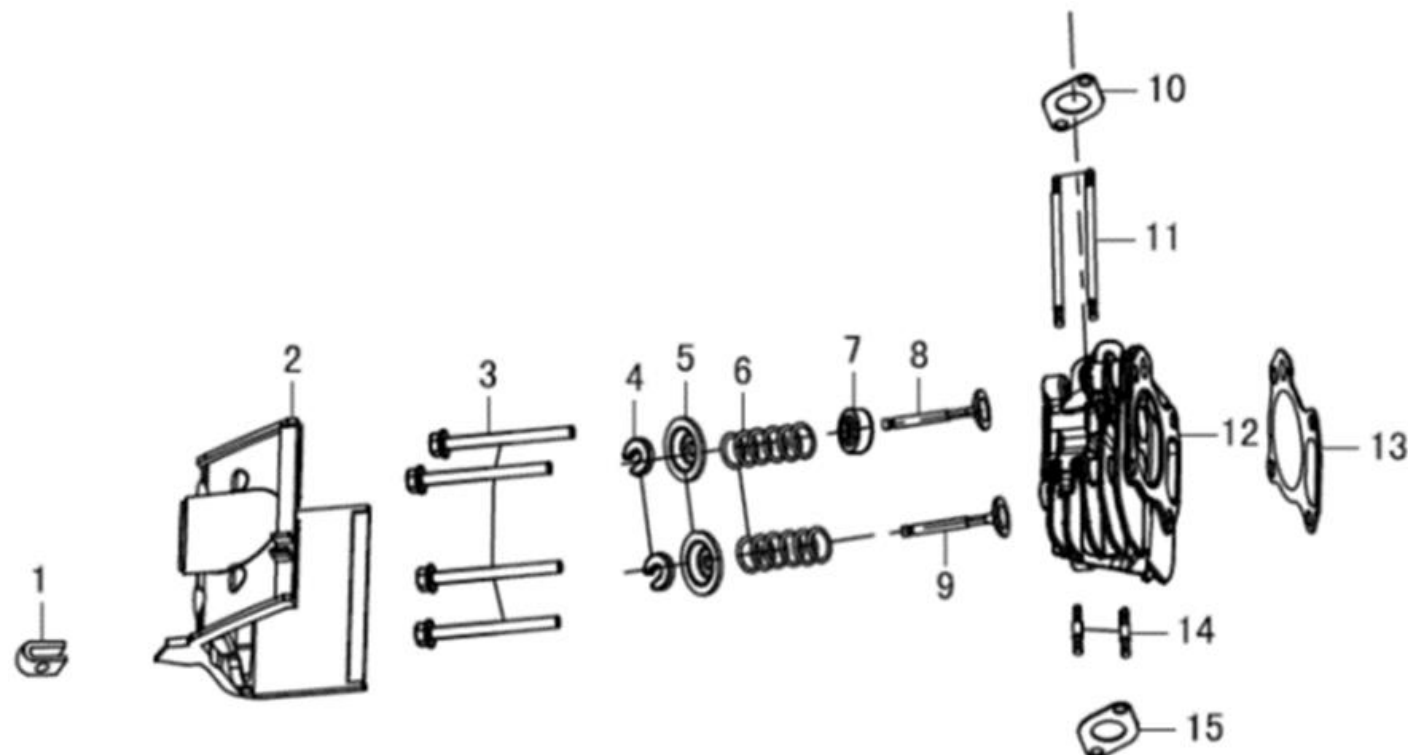
NO.	DESCRIPTION	MAXWATT PART NUMBER
1	Bearing	
2	Locating Pin	
3	Crank Case	
4	Crank Shaft Oil Seal	
5	Lighter	
6	Bolt M6	
7	Bolt M6	
8	Trigger Coil	

## CRANK CASE COVER



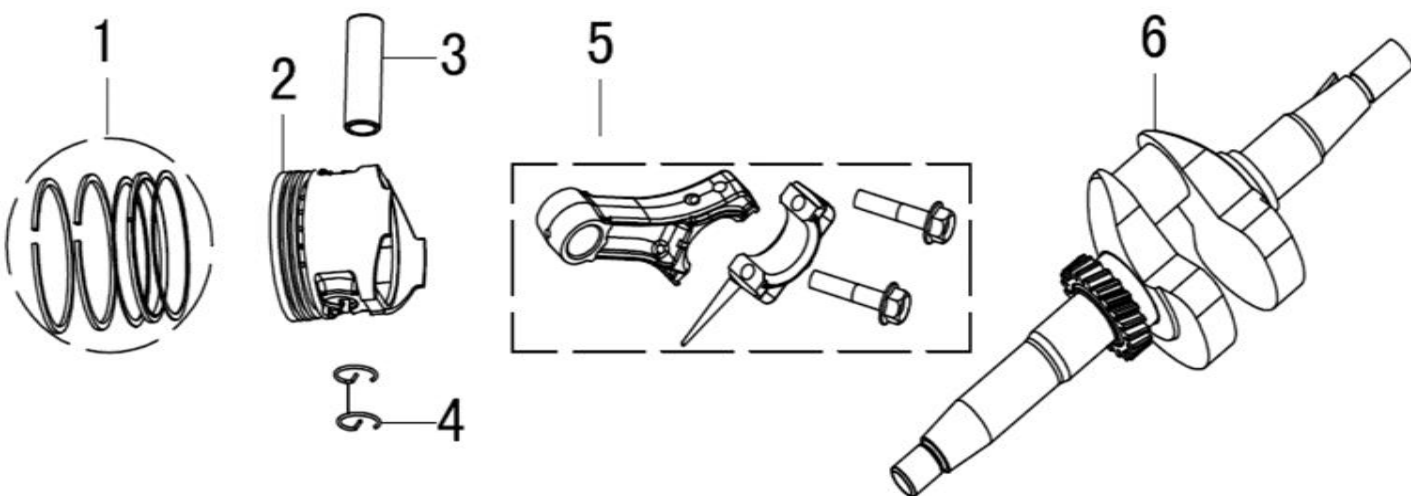
NO.	DESCRIPTION	MAXWATT PART NUMBER
1	Bolt M6	
2	Crankshaft Oil seal	
3	Oil Dipstick Assembly .	
4	Crank Case Cover	
5	Bearing	
6	Bolt M6	
7	Crank Case Gasket	
8	Clamping Plate	
9	Bolt M6	
10	Oil Protector	

## CYLINDER HEAD



NO.	DESCRIPTION	MAXWATT PART NUMBER
1	Screw	SP3000IS-108
2	Cylinder Head Cover	
3	Bolt M8	
4	Clamping Ring	
5	Intake Valve Spring Seat	
6	Valve Spring	
7	Intake Valve Oil Shield	
8	Intake Valve	
9	Exhaust Valve	
10	Air Intake Gasket	
11	Intake Nut	
12	Cylinder Head Assembly .	
13	Cylinder Head Gasket	
14	Exhaust Nut	
15	Muffler Gasket	

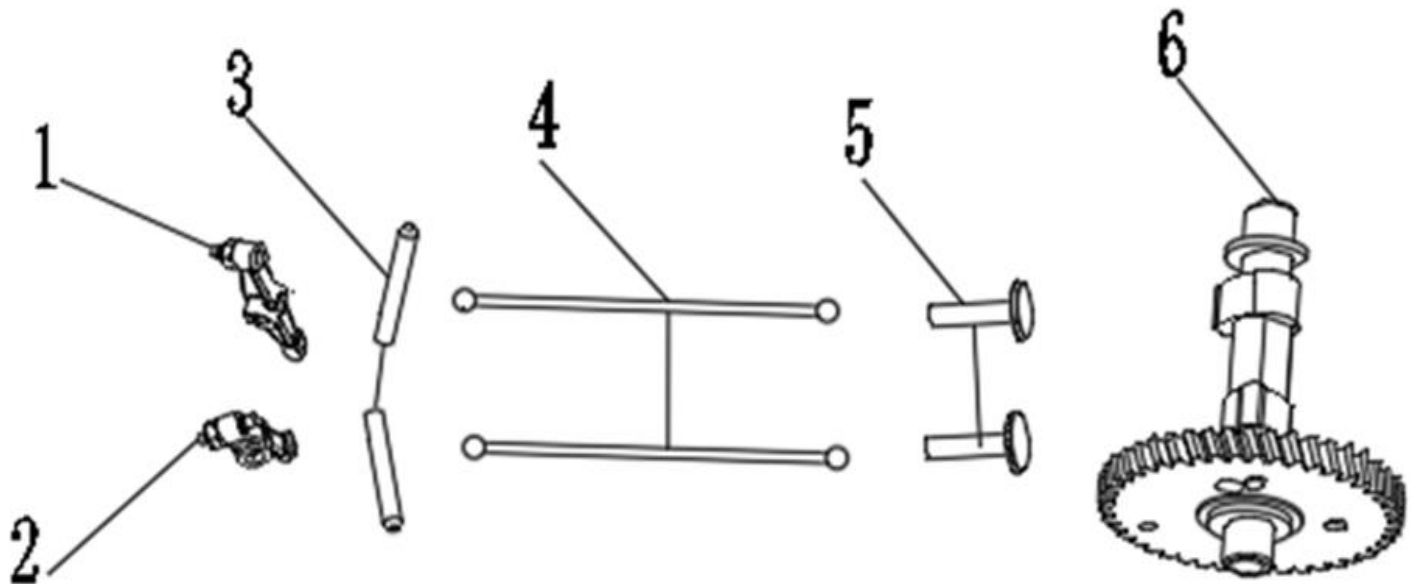
## PISTON CONNECTING ROD AND CRANK SHAFT



NO.	DESCRIPTION	MAXWATT PART NUMBER
1	Piston Ring	SP3000IS-109
2	Piston	
3	Piston Pin	
4	Piston Pin Collar	
5	Connecting Rod	SP3000IS-110
6	Crankshaft Assembly .	SP3000IS-111



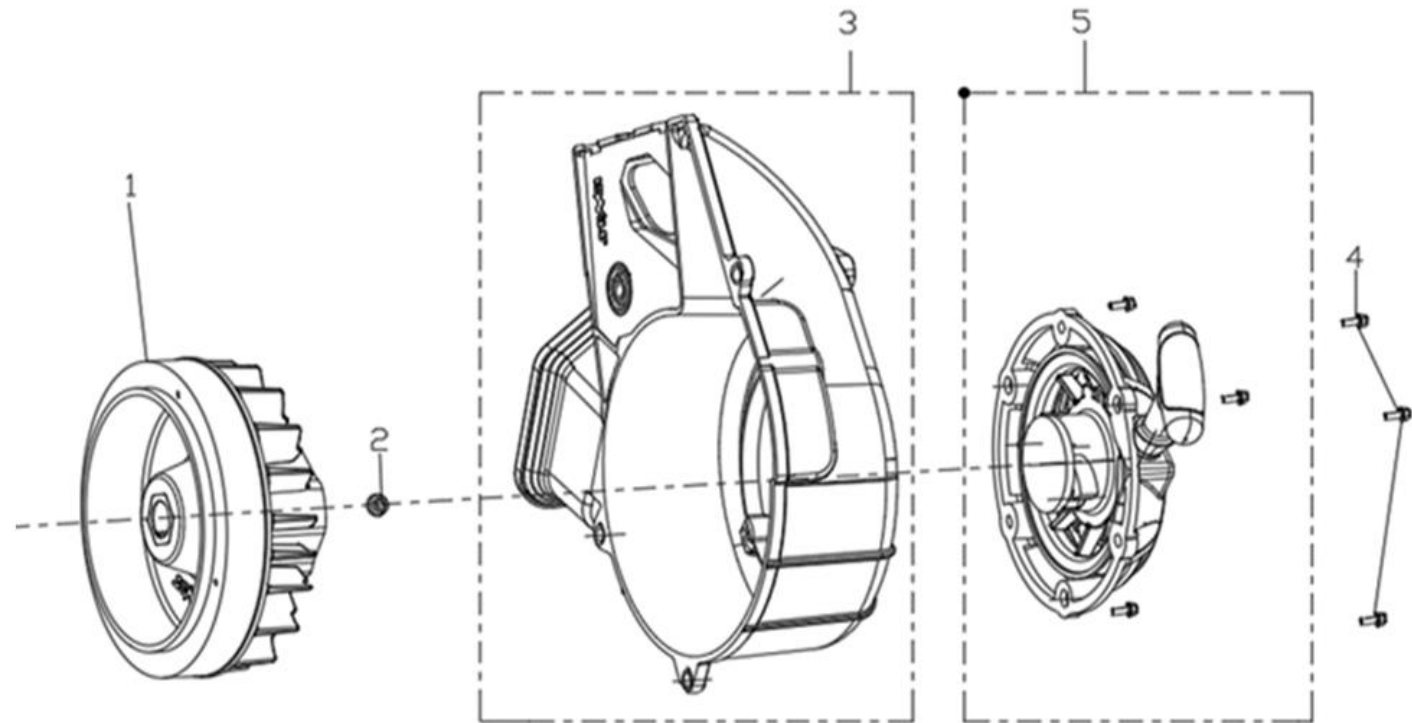
CAMSHAFT



NO.	DESCRIPTION	MAXWATT PART NUMBER
1	Valve Rocker Assembly . ( Left )	SP3000IS-112
2	Valve Rocker Assembly . ( Right )	
3	Rocker Arm	
4	Valve Push Rod	
5	Valve Tappet	
6	Camshaft	SP3000IS-113

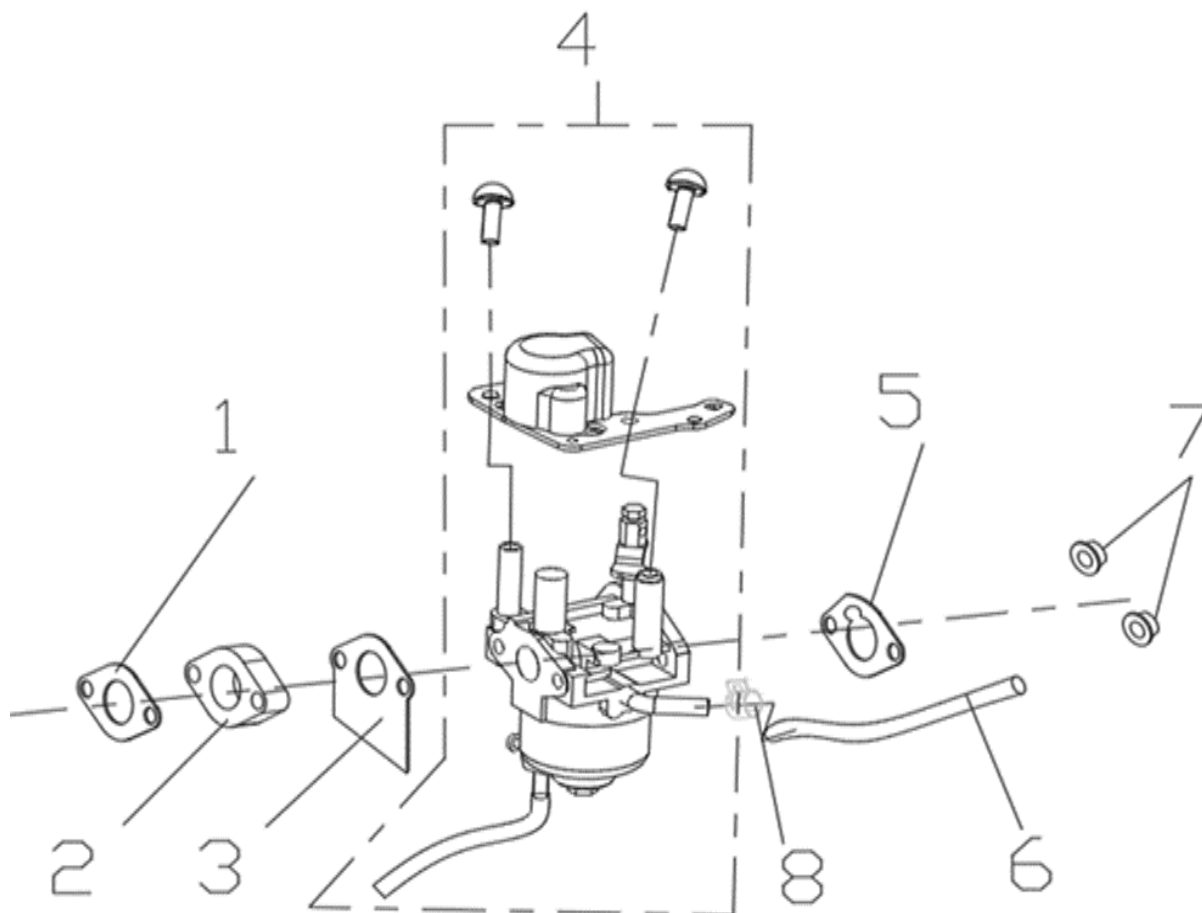


## RECOIL STARTER



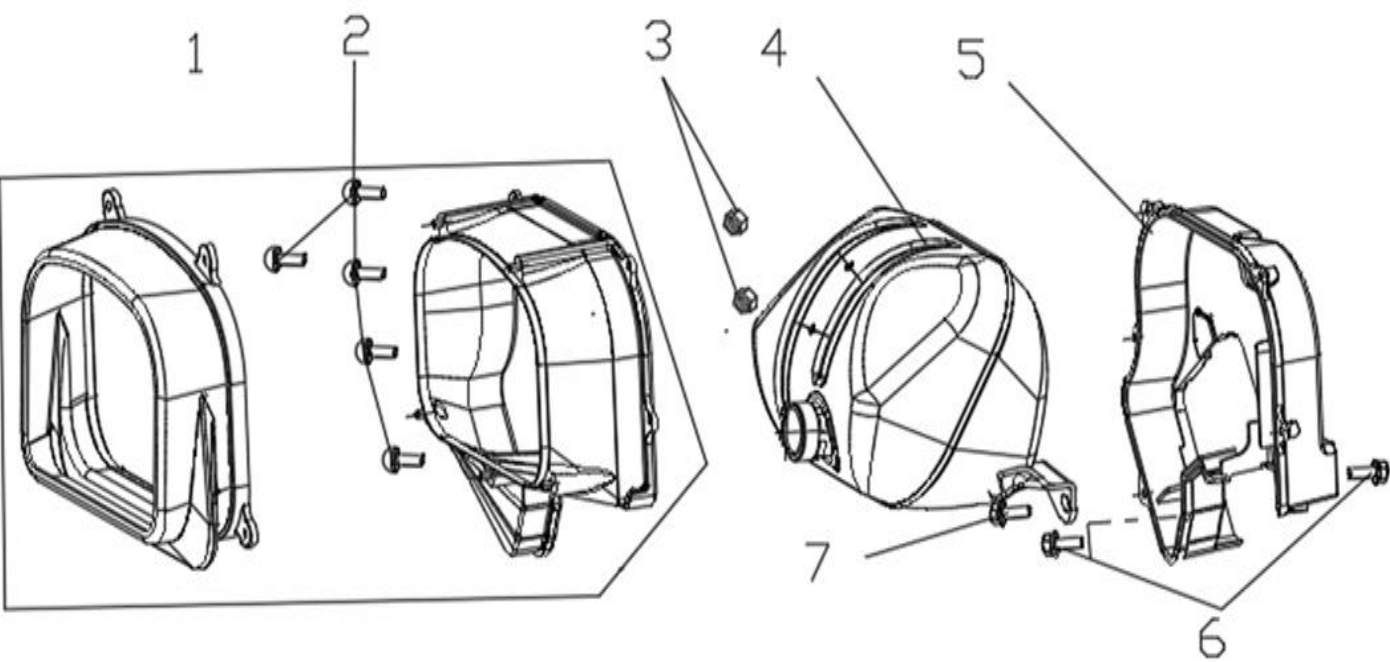
NO.	DESCRIPTION	MAXWATT PART NUMBER
1	Fly wheel	SP3000IS-114
2	Nut M12	
3	Starter Assembly .	
4	Bolt M6	
5	Recoil starter	

## CARBURETTOR



NO.	DESCRIPTION	MAXWATT PART NUMBER
1	Intake Gasket	SP3000IS-115
2	Carburetor Connection Block	
3	Carburetor Gasket	
4	Carburetor	
5	Air Cleaner Gasket	
6	Fuel Pipe	
7	Nut	
8	Clamp	

MUFFLER AND FUEL TANK



NO.	DESCRIPTION	MAXWATT PART NUMBER
1	Muffler Cover (Outside)	SP3000IS-116
2	Screw	
3	Nut M6	
4	Muffler parts	
5	Muffler Cover (Inside)	
6	Bolt M6	
7	Bolt M6	

# SPARE PARTS AND SERVICING

## WHERE DO I TAKE MY PRODUCT FOR SERVICE OR REPAIR?

Please contact MaxWatt at [customercare@maxwatt.com.au](mailto:customercare@maxwatt.com.au) we can provide after-sales support for your generator.

Should you experience any problems with your generator, it is recommended that you consult the troubleshooting guide in the Instruction Manual first before contacting us. The most common issues can be resolved quickly in this manner without the inconvenience of having to take your generator to a service agent.

## ARE SPARE PARTS AVAILABLE FOR PURCHASE?

Yes, we carry a full range of spare parts for all products. Please check our catalogue for a full list of spare parts and contact us if you need to order anything.

Distributed by:



---

Shop 15/1440 New Cleveland Rd, Chandler QLD 4155

(07) 3732 5363

[customercare@maxwatt.com.au](mailto:customercare@maxwatt.com.au)